

Recombinant

DGRmAb®

**BMP4 (DGR15418) Rabbit mAb**

db12985

Package : 10µL 20µL 50µL 100µL

**Product Name** : BMP4 (DGR15418) Rabbit mAb**Cat.No.:** db12985**Synonyms** : ZYME; BMP2B; OFC11; BMP2B1; MCOPS6**Application** : WB, IHC-P, ICC/IF, FC, IP**Reactivity** : Human**Host species** : Rabbit**Background**

This gene encodes a secreted ligand of the TGF-beta (transforming growth factor-beta) superfamily of proteins. Ligands of this family bind various TGF-beta receptors leading to recruitment and activation of SMAD family transcription factors that regulate gene expression. The encoded preproprotein is proteolytically processed to generate each subunit of the disulfide-linked homodimer. This protein regulates heart development and adipogenesis. Mutations in this gene are associated with orofacial cleft and microphthalmia in human patients. The encoded protein may also be involved in the pathology of multiple cardiovascular diseases and human cancers. [provided by RefSeq, Jul 2016]

**Immunogen**

A synthetic peptide of human BMP4

**Gene ID**

652

**Swiss Prot**

P12644

**Synonyms**

ZYME; BMP2B; OFC11; BMP2B1; MCOPS6

**Reactivity**

Human

**Application**

WB, IHC-P, ICC/IF, FC, IP

**Recommended dilution**

WB: 1:2000-1:20000

IHC-P: 1:100-1:200

ICC/IF: 1:200-1:500

FC: 1:100-1:500

IP: 1:10-1:100

**Calculated MW**

47 kDa

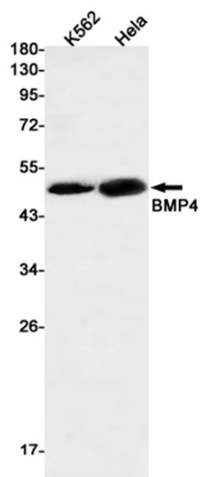
**Observed MW**

47 kDa

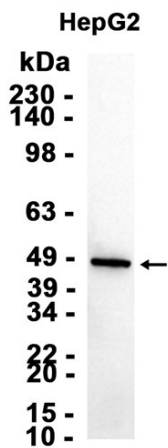
**Host species**

Rabbit

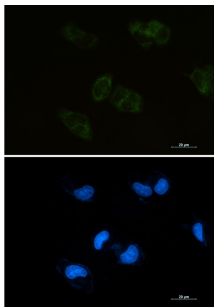
<b>Clonality</b>	Monoclonal
<b>Clonality No.</b>	DGR15418
<b>Isotype</b>	IgG
<b>Purity</b>	Affinity Purification
<b>Conjugation</b>	Un-conjugated
<b>Storage Stability</b>	Store at -20°C. Supplied in 50mM Tris-Glycine(pH 7.4), 0.15M NaCl, 40% Glycerol, 0.01% sodium azide and 0.05% BSA. Stable for 12 months from date of receipt.



Western blot detection of BMP4 in K562,HeLa cell lysates using BMP4 antibody(1:500 diluted).



Western blot analysis of extracts from HepG2 cells using db12985 at 1:5000.



Immunofluorescent analysis of HepG2 cells using db12985 antibody (green), and DAPI (blue).