

Recombinant

DGRmAb®

HLA-A (DGR15532) Rabbit mAb

db14319

Package : 10µL 20µL 50µL 100µL

Product Name : HLA-A (DGR15532) Rabbit mAb**Cat.No.:** db14319**Synonyms :** HLAA**Application :** WB, IHC-P, ICC/IF, FC, IP**Reactivity :** Human**Host species :** Rabbit**Background**

HLA-A belongs to the HLA class I heavy chain paralogues. This class I molecule is a heterodimer consisting of a heavy chain and a light chain (beta-2 microglobulin). The heavy chain is anchored in the membrane. Class I molecules play a central role in the immune system by presenting peptides derived from the endoplasmic reticulum lumen. They are expressed in nearly all cells. The heavy chain is approximately 45 kDa and its gene contains 8 exons. Exon 1 encodes the leader peptide, exons 2 and 3 encode the alpha1 and alpha2 domains, which both bind the peptide, exon 4 encodes the alpha3 domain, exon 5 encodes the transmembrane region, and exons 6 and 7 encode the cytoplasmic tail. Polymorphisms within exon 2 and exon 3 are responsible for the peptide binding specificity of each class one molecule. Typing for these polymorphisms is routinely done for bone marrow and kidney transplantation. Hundreds of HLA-A alleles have been described. [provided by RefSeq, Jul 2008]

Immunogen

A synthetic peptide of human HLA A

Gene ID

3105

Swiss Prot

P01891

Synonyms

HLAA

Reactivity

Human

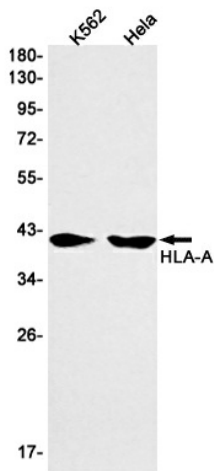
Application

WB, IHC-P, ICC/IF, FC, IP

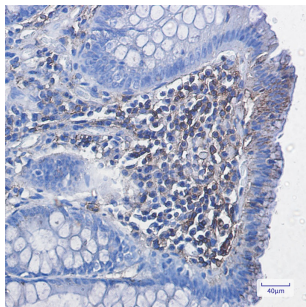
Recommended dilutionWB: 1:1000
IHC-P: 1:100
ICC/IF: 1:100
FC: 1:10-1:100
IP: 1:20**Calculated MW**

41 kDa

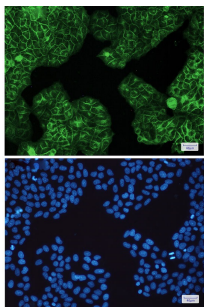
Observed MW	41 kDa
Host species	Rabbit
Clonality	Monoclonal
Clonality No.	DGR15532
Isotype	IgG
Purity	Affinity Purification
Conjugation	Un-conjugated
Storage Stability	Store at -20°C. Supplied in 50mM Tris-Glycine(pH 7.4), 0.15M NaCl, 40% Glycerol, 0.01% sodium azide and 0.05% BSA. Stable for 12 months from date of receipt.



Western blot detection of HLA-A in K562,HeLa cell lysates using HLA-A antibody(1:1000 diluted).



Immunohistochemical analysis of paraffin-embedded human colon cancer using db14319 antibody.



Immunofluorescent analysis of HeLa cells using db14319 antibody (green), and DAPI (blue).

