

Recombinant

DGRmAb®

FH (DGR15640) Rabbit mAb

db12976

Package : 10µL 20µL 50µL 100µL

Product Name : FH (DGR15640) Rabbit mAb**Cat.No.:** db12976**Synonyms** : MCL; FMRD; LRCC; HLRCC; MCUL1**Application** : WB, IHC-P, ICC/IF, FC, IP**Reactivity** : Human,Mouse,Rat**Host species** : Rabbit**Background**

The protein encoded by this gene is an enzymatic component of the tricarboxylic acid (TCA) cycle, or Krebs cycle, and catalyzes the formation of L-malate from fumarate. It exists in both a cytosolic form and an N-terminal extended form, differing only in the translation start site used. The N-terminal extended form is targeted to the mitochondrion, where the removal of the extension generates the same form as in the cytoplasm. It is similar to some thermostable class II fumarases and functions as a homotetramer. Mutations in this gene can cause fumarase deficiency and lead to progressive encephalopathy. [provided by RefSeq, Jul 2008]

Immunogen

Recombinant protein of human FH

Gene ID

2271

Swiss Prot

P07954

Synonyms

MCL; FMRD; LRCC; HLRCC; MCUL1

Reactivity

Human,Mouse,Rat

Application

WB, IHC-P, ICC/IF, FC, IP

Recommended dilution

WB: 1:1000

IHC-P: 1:200-1:500

ICC/IF: 1:100

FC: 1:200-1:500

IP: 1:20-1:50

Calculated MW

55 kDa

Observed MW

49 kDa

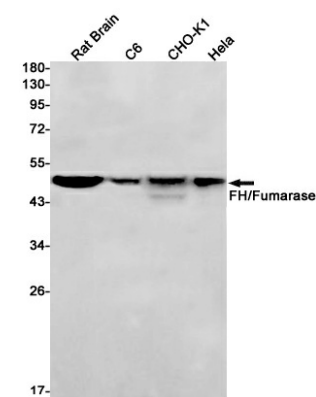
Host species

Rabbit

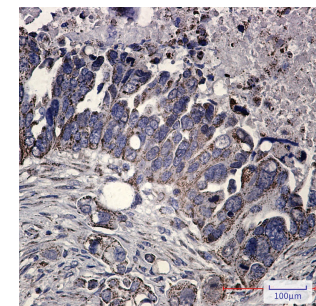
Clonality

Monoclonal

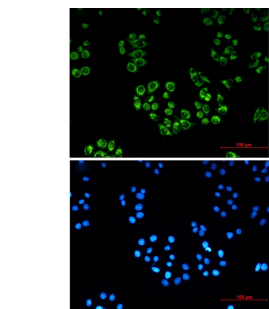
Clonality No.	DGR15640
Isotype	IgG
Purity	Affinity Purification
Conjugation	Un-conjugated
Storage Stability	Store at -20°C. Supplied in 50mM Tris-Glycine(pH 7.4), 0.15M NaCl, 40% Glycerol, 0.01% sodium azide and 0.05% BSA. Stable for 12 months from date of receipt.



Western blot detection of FH/Fumarase in Rat Brain,C6,CHO-K1,HeLa cell lysates using FH/Fumarase antibody(1:1000 diluted).



Immunohistochemical analysis of paraffin-embedded human Cholangiocarcinoma using db12976 antibody.



Immunofluorescent analysis of HeLa cells using db12976 antibody (green), and DAPI (blue).