

Recombinant

DGRmAb®

pan Cadherin (DGR15680) Rabbit mAb

db11496

Package : 10µL 20µL 50µL 100µL

Product Name : pan Cadherin (DGR15680) Rabbit mAb**Cat.No.:** db11496**Synonyms :** CDHP; HJMD; PCAD**Application :** WB, IHC-P, ICC/IF, FC, IP**Reactivity :** Human,Mouse,Rat**Host species :** Rabbit**Background**

This gene encodes a classical cadherin of the cadherin superfamily. Alternative splicing results in multiple transcript variants, at least one of which encodes a preproprotein that is proteolytically processed to generate the mature glycoprotein. This calcium-dependent cell-cell adhesion protein is comprised of five extracellular cadherin repeats, a transmembrane region and a highly conserved cytoplasmic tail. This gene is located in a gene cluster in a region on the long arm of chromosome 16 that is involved in loss of heterozygosity events in breast and prostate cancer. In addition, aberrant expression of this protein is observed in cervical adenocarcinomas. Mutations in this gene are associated with hypotrichosis with juvenile macular dystrophy and ectodermal dysplasia, ectrodactyly, and macular dystrophy syndrome (EEMS). [provided by RefSeq, Nov 2015]

Immunogen

A synthetic peptide of human pan Cadherin

Gene ID

1001

Swiss Prot

P12830

Synonyms

CDHP; HJMD; PCAD

Reactivity

Human,Mouse,Rat

Application

WB, IHC-P, ICC/IF, FC, IP

Recommended dilution

WB: 1:2000-1:20000

IHC-P: 1:200-1:500

ICC/IF: 1:100-1:200

FC: 1:20-1:50

IP: 1:20

Calculated MW

100 kDa

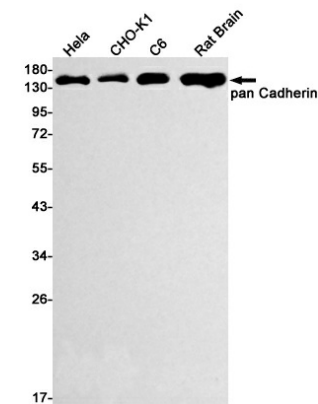
Observed MW

130-150 kDa

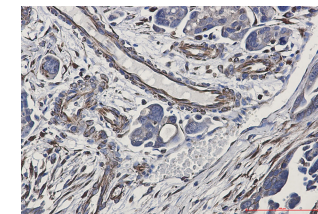
Host species

Rabbit

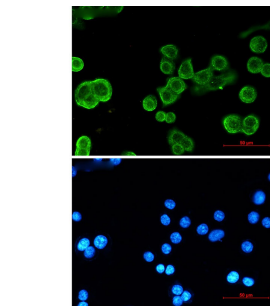
| | |
|-------------------|---|
| Clonality | Monoclonal |
| Clonality No. | DGR15680 |
| Isotype | IgG |
| Purity | Affinity Purification |
| Conjugation | Un-conjugated |
| Storage Stability | Store at -20°C. Supplied in 50mM Tris-Glycine(pH 7.4), 0.15M NaCl, 40% Glycerol, 0.01% sodium azide and 0.05% BSA. Stable for 12 months from date of receipt. |



Western blot detection of pan Cadherin in HeLa,CHO-K1,C6,Rat Brain lysates using pan Cadherin antibody(1:500 diluted).



Immunohistochemical analysis of paraffin-embedded human Cholangiocarcinoma using db11496 antibody.



Immunofluorescent analysis of MCF-7 cells using db11496 antibody (green), and DAPI (blue).