

Recombinant

DGRmAb®

## VEGFD (DGR15699) Rabbit mAb

db13161

Package : 10µL 20µL 50µL 100µL

**Product Name :** VEGFD (DGR15699) Rabbit mAb**Cat.No.:** db13161**Synonyms :** FIGF; VEGF-D**Application :** WB, IHC-P, ICC/IF, FC**Reactivity :** Human,Mouse,Rat**Host species :** Rabbit**Background**

The protein encoded by this gene is a member of the platelet-derived growth factor/vascular endothelial growth factor (PDGF/VEGF) family and is active in angiogenesis, lymphangiogenesis, and endothelial cell growth. This secreted protein undergoes a complex proteolytic maturation, generating multiple processed forms which bind and activate VEGFR-2 and VEGFR-3 receptors. This protein is structurally and functionally similar to vascular endothelial growth factor C. Read-through transcription has been observed between this locus and the upstream PIR (GeneID 8544) locus. [provided by RefSeq, Feb 2011]

**Immunogen**

A synthetic peptide of human VEGFD

**Gene ID**

2277

**Swiss Prot**

O43915

**Synonyms**

FIGF; VEGF-D

**Reactivity**

Human,Mouse,Rat

**Application**

WB, IHC-P, ICC/IF, FC

**Recommended dilution**

WB: 1:1000-1:5000

IHC-P: 1:100-1:1000

ICC/IF: 1:100-1:200

FC: 1:100-1:500

**Calculated MW**

40 kDa

**Observed MW**

40 kDa

**Host species**

Rabbit

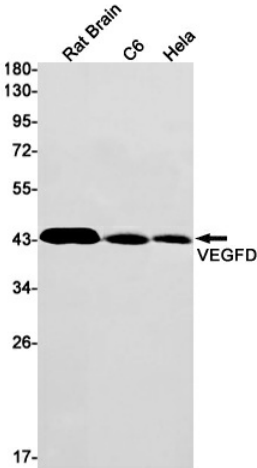
**Clonality**

Monoclonal

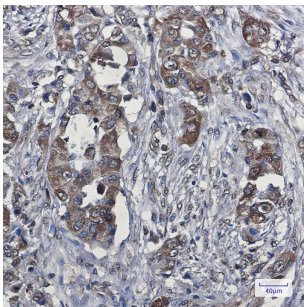
**Clonality No.**

DGR15699

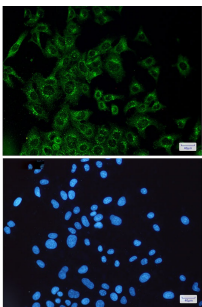
Isotype	IgG
Purity	Affinity Purification
Conjugation	Un-conjugated
Storage Stability	Store at -20°C. Supplied in 50mM Tris-Glycine(pH 7.4), 0.15M NaCl, 40% Glycerol, 0.01% sodium azide and 0.05% BSA. Stable for 12 months from date of receipt.



Western blot detection of VEGFD in Rat Brain,C6,HeLa cell lysates using VEGFD antibody(1:1000 diluted).



Immunohistochemical analysis of paraffin-embedded human lung cancer using db13161 antibody.



Immunofluorescent analysis of HeLa cells using db13161 antibody (green), and DAPI (blue).