

Recombinant

DGRmAb®

Raf1 (DGR15751) Rabbit mAb

db12651

Package : 10µL 20µL 50µL 100µL

Product Name : Raf1 (DGR15751) Rabbit mAb**Cat.No.:** db12651**Synonyms :** NS5; CRAF; Raf-1; c-Raf; CMD1NN**Application :** WB, ICC/IF, FC**Reactivity :** Human,Mouse,Rat**Host species :** Rabbit**Background**

This gene is the cellular homolog of viral raf gene (v-raf). The encoded protein is a MAP kinase kinase kinase (MAP3K), which functions downstream of the Ras family of membrane associated GTPases to which it binds directly. Once activated, the cellular RAF1 protein can phosphorylate to activate the dual specificity protein kinases MEK1 and MEK2, which in turn phosphorylate to activate the serine/threonine specific protein kinases, ERK1 and ERK2. Activated ERKs are pleiotropic effectors of cell physiology and play an important role in the control of gene expression involved in the cell division cycle, apoptosis, cell differentiation and cell migration. Mutations in this gene are associated with Noonan syndrome 5 and LEOPARD syndrome 2. [provided by RefSeq, Jul 2008]

Immunogen

A synthetic peptide of human Raf1

Gene ID

5894

Swiss Prot

P04049

Synonyms

NS5; CRAF; Raf-1; c-Raf; CMD1NN

Reactivity

Human,Mouse,Rat

Application

WB, ICC/IF, FC

Recommended dilution

WB: 1:1000

ICC/IF: 1:100-1:200

FC: 1:100

Calculated MW

73 kDa

Observed MW

73 kDa

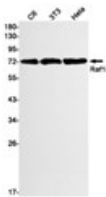
Host species

Rabbit

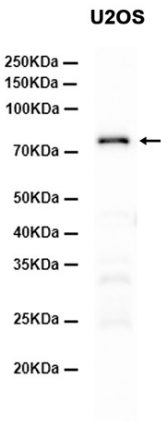
Clonality

Monoclonal

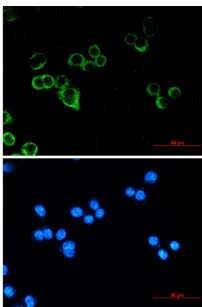
Clonality No.	DGR15751
Isotype	IgG
Purity	Affinity Purification
Conjugation	Un-conjugated
Storage Stability	Store at -20°C. Supplied in 50mM Tris-Glycine(pH 7.4), 0.15M NaCl, 40% Glycerol, 0.01% sodium azide and 0.05% BSA. Stable for 12 months from date of receipt.



Western blot detection of Raf1 in C6,3T3,Hela cell lysates using Raf1 antibody(1:1000 diluted).



Western blot analysis of extracts from U2OS cells using db12651 at 1:1000.



Immunofluorescent analysis of MCF-7 cells using db12651 antibody (green), and DAPI (blue).