

Recombinant

DGRmAb®

## SESN2 (DGR15762) Rabbit mAb

db14722

Package : 10µL 20µL 50µL 100µL

**Product Name** : SESN2 (DGR15762) Rabbit mAb

**Cat.No.:** db14722

**Synonyms** : HI95; SES2; SEST2

**Application** : WB, ICC/IF, FC, IP

**Reactivity** : Human,Mouse,Rat

**Host species** : Rabbit

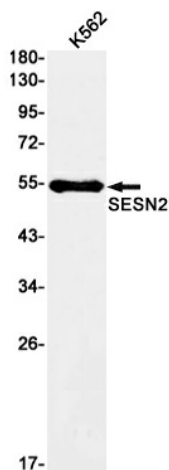
<b>Background</b>	This gene encodes a member of the sestrin family of PA26-related proteins. The encoded protein may function in the regulation of cell growth and survival. This protein may be involved in cellular response to different stress conditions. [provided by RefSeq, Jul 2008]
<b>Immunogen</b>	Recombinant protein of human SESN2
<b>Gene ID</b>	83667
<b>Swiss Prot</b>	P58004
<b>Synonyms</b>	HI95; SES2; SEST2
<b>Reactivity</b>	Human,Mouse,Rat
<b>Application</b>	WB, ICC/IF, FC, IP
<b>Recommended dilution</b>	WB: 1:1000 ICC/IF: 1:100 FC: 1:50-1:100 IP: 1:20-1:50
<b>Calculated MW</b>	55 kDa
<b>Observed MW</b>	55 kDa
<b>Host species</b>	Rabbit
<b>Clonality</b>	Monoclonal
<b>Clonality No.</b>	DGR15762
<b>Isotype</b>	IgG
<b>Purity</b>	Affinity Purification

Conjugation

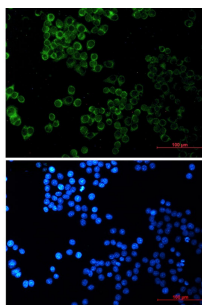
Un-conjugated

Storage Stability

Store at -20°C. Supplied in 50mM Tris-Glycine(pH 7.4), 0.15M NaCl, 40% Glycerol, 0.01% sodium azide and 0.05% BSA. Stable for 12 months from date of receipt.



Western blot detection of SESN2 in K562 cell lysates using SESN2 antibody(1:1000 diluted).



Immunofluorescent analysis of HeLa cells using db14722 antibody (green), and DAPI (blue).