

Recombinant

DGRmAb®

SIRT6 (DGR15766) Rabbit mAb

db13509

Package : 10µL 20µL 50µL 100µL

Product Name : SIRT6 (DGR15766) Rabbit mAb**Cat.No.:** db13509**Synonyms** : SIR2L6**Application** : WB, ICC/IF, IP**Reactivity** : Human,Mouse,Rat**Host species** : Rabbit**Background**

This gene encodes a member of the sirtuin family of NAD-dependent enzymes that are implicated in cellular stress resistance, genomic stability, aging and energy homeostasis. The encoded protein is localized to the nucleus, exhibits ADP-ribosyl transferase and histone deacetylase activities, and plays a role in DNA repair, maintenance of telomeric chromatin, inflammation, lipid and glucose metabolism. Alternative splicing results in multiple transcript variants encoding different isoforms. [provided by RefSeq, Mar 2016]

Immunogen

A synthetic peptide of human SIRT6

Gene ID

51548

Swiss Prot

Q8N6T7

Synonyms

SIR2L6

Reactivity

Human,Mouse,Rat

Application

WB, ICC/IF, IP

Recommended dilutionWB: 1:1000
ICC/IF: 1:500-1:1000
IP: 1:20-1:50**Calculated MW**

39 kDa

Observed MW

42 kDa

Host species

Rabbit

Clonality

Monoclonal

Clonality No.

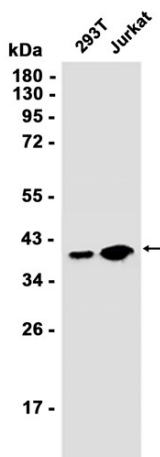
DGR15766

Isotype

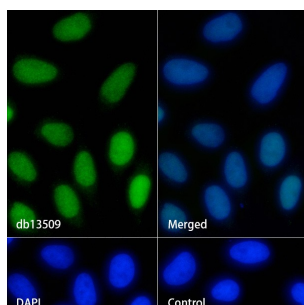
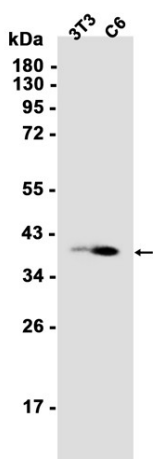
IgG

Purity	Affinity Purification
Conjugation	Un-conjugated
Storage Stability	Store at -20°C. Supplied in 50mM Tris-Glycine(pH 7.4), 0.15M NaCl, 40% Glycerol, 0.01% sodium azide and 0.05% BSA. Stable for 12 months from date of receipt.

Western blot analysis of extracts from 293T, Jurkat cells using db13509 at 1:1000.



Western blot analysis of extracts from 3T3, C6 cells using db13509 at 1:1000.



Immunofluorescence analysis of HeLa cells labelling SIRT6 with db13509.

The cells were fixed with 4% PFA (10min, RT) followed by treatment with 0.1% Triton X-100 (10min, RT), and blocked in 1% BSA/10% normal goat serum/0.3M glycine in 0.1% PBS-Tween 20 for 1h. The cells were then incubate with db13509 (1:500) at room temprature for 1h, followed by a further incubation at room temperature for 45min with Goat Anti Rabbit IgG (H+L)-AF488 (db10005, shown in green). Nuclear DNA was labeled in blue with DAPI.

Control: Secondary antibody only.