

Recombinant

DGRmAb®

CDK4 (DGR15767) Rabbit mAb

db13778

Package : 10µL 20µL 50µL 100µL

Product Name : CDK4 (DGR15767) Rabbit mAb**Cat.No.:** db13778**Synonyms :** CMM3; PSK-J3**Application :** WB, ICC/IF, IP**Reactivity :** Human,Mouse,Rat**Host species :** Rabbit**Background**

The protein encoded by this gene is a member of the Ser/Thr protein kinase family. This protein is highly similar to the gene products of *S. cerevisiae* cdc28 and *S. pombe* cdc2. It is a catalytic subunit of the protein kinase complex that is important for cell cycle G1 phase progression. The activity of this kinase is restricted to the G1-S phase, which is controlled by the regulatory subunits D-type cyclins and CDK inhibitor p16(INK4a). This kinase was shown to be responsible for the phosphorylation of retinoblastoma gene product (Rb). Mutations in this gene as well as in its related proteins including D-type cyclins, p16(INK4a) and Rb were all found to be associated with tumorigenesis of a variety of cancers. Multiple polyadenylation sites of this gene have been reported. [provided by RefSeq, Jul 2008]

Immunogen

Recombinant protein of human Cdk4

Gene ID

1019

Swiss Prot

P11802

Synonyms

CMM3; PSK-J3

Reactivity

Human,Mouse,Rat

Application

WB, ICC/IF, IP

Recommended dilution

WB: 1:1000

ICC/IF: 1:100-1:200

IP: 1:50

Calculated MW

34 kDa

Observed MW

34 kDa

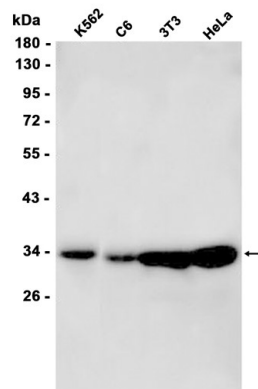
Host species

Rabbit

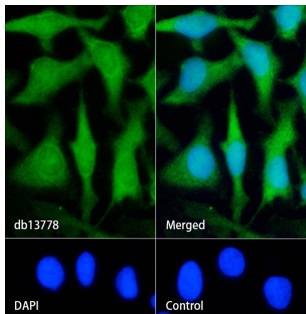
Clonality

Monoclonal

Clonality No.	DGR15767
Isotype	IgG
Purity	Affinity Purification
Conjugation	Un-conjugated
Storage Stability	Store at -20°C. Supplied in 50mM Tris-Glycine(pH 7.4), 0.15M NaCl, 40% Glycerol, 0.01% sodium azide and 0.05% BSA. Stable for 12 months from date of receipt.



Western blot analysis of extracts from K562,C6,3T3,HeLa cells using db13778 at 1:1000.



Immunofluorescence analysis of HeLa cells labelling CDK4 with db13778.

The cells were fixed with cold 100% methanol (10min, 4°C) and blocked in 1% BSA/10% normal goat serum/0.3M glycine in 0.1% PBS-Tween 20 for 1h. The cells were then incubate with db13778 (1:100) at room temprature for 1h, followed by a further incubation at room temperature for 45min with Goat Anti Rabbit IgG (H+L)-AF488 (db10005, shown in green). Nuclear DNA was labeled in blue with DAPI.

Control: Secondary antibody only.