

Recombinant

DGRmAb®

## Hexokinase II (DGR15838) Rabbit mAb

db13142

Package : 10µL 20µL 50µL 100µL

**Product Name** : Hexokinase II (DGR15838) Rabbit mAb**Cat.No.:** db13142**Synonyms** : HKII; HXK2**Application** : WB, IHC-P, ICC/IF, FC, IP**Reactivity** : Human,Mouse,Rat**Host species** : Rabbit**Background**

Hexokinases phosphorylate glucose to produce glucose-6-phosphate, the first step in most glucose metabolism pathways. This gene encodes hexokinase 2, the predominant form found in skeletal muscle. It localizes to the outer membrane of mitochondria. Expression of this gene is insulin-responsive, and studies in rat suggest that it is involved in the increased rate of glycolysis seen in rapidly growing cancer cells. [provided by RefSeq, Apr 2009]

**Immunogen**

Recombinant protein of human Hexokinase II

**Gene ID**

3099

**Swiss Prot**

P52789

**Synonyms**

HKII; HXK2

**Reactivity**

Human,Mouse,Rat

**Application**

WB, IHC-P, ICC/IF, FC, IP

**Recommended dilution**WB: 1:1000  
IHC-P: 1:200-1:500  
ICC/IF: 1:100  
FC: 1:50-1:100  
IP: 1:20-1:50**Calculated MW**

102 kDa

**Observed MW**

102 kDa

**Host species**

Rabbit

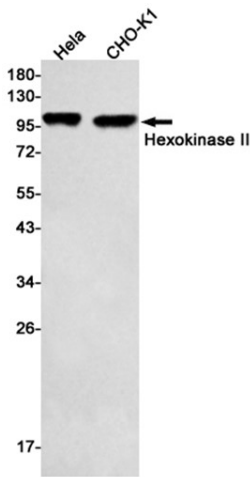
**Clonality**

Monoclonal

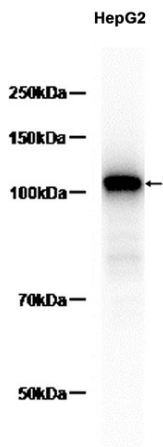
**Clonality No.**

DGR15838

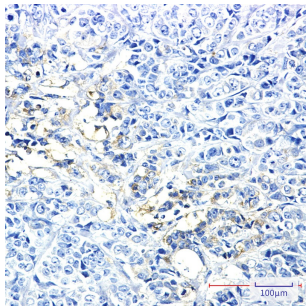
Isotype	IgG
Purity	Affinity Purification
Conjugation	Un-conjugated
Storage Stability	Store at -20°C. Supplied in 50mM Tris-Glycine(pH 7.4), 0.15M NaCl, 40% Glycerol, 0.01% sodium azide and 0.05% BSA. Stable for 12 months from date of receipt.



Western blot detection of Hexokinase II in HeLa,CHO-K1 cell lysates using Hexokinase II antibody(1:500 diluted).



Western blot analysis of extracts from HepG2 cells using db13142 at 1:1000.



Immunohistochemical analysis of paraffin-embedded human breast cancer using db13142 antibody.