

Recombinant

DGRmAb®

**TRAF6 (DGR15958) Rabbit mAb**

db14981

Package : 10µL 20µL 50µL 100µL

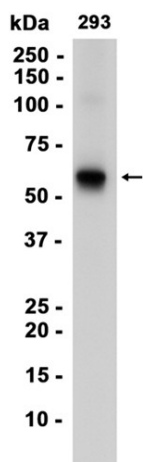
**Product Name** : TRAF6 (DGR15958) Rabbit mAb**Cat.No.:** db14981**Synonyms** : RNF85; MGC:3310**Application** : WB, FC**Reactivity** : Human, Mouse, Rat**Host species** : Rabbit**Background**

The protein encoded by this gene is a member of the TNF receptor associated factor (TRAF) protein family. TRAF proteins are associated with, and mediate signal transduction from, members of the TNF receptor superfamily. This protein mediates signaling from members of the TNF receptor superfamily as well as the Toll/IL-1 family. Signals from receptors such as CD40, TNFSF11/RANCE and IL-1 have been shown to be mediated by this protein. This protein also interacts with various protein kinases including IRAK1/IRAK, SRC and PKCzeta, which provides a link between distinct signaling pathways. This protein functions as a signal transducer in the NF-kappaB pathway that activates IkkappaB kinase (IKK) in response to proinflammatory cytokines. The interaction of this protein with UBE2N/UBC13, and UBE2V1/UEV1A, which are ubiquitin conjugating enzymes catalyzing the formation of polyubiquitin chains, has been found to be required for IKK activation by this protein. This protein also interacts with the transforming growth factor (TGF) beta receptor complex and is required for Smad-independent activation of the JNK and p38 kinases. This protein has an amino terminal RING domain which is followed by four zinc-finger motifs, a central coiled-coil region and a highly conserved carboxyl terminal domain, known as the TRAF-C domain. Two alternatively spliced transcript variants, encoding an identical protein, have been reported. [provided by RefSeq, Feb 2012]

**Immunogen** A synthetic peptide of human TRAF6**Gene ID** 7189**Swiss Prot** Q9Y4K3**Synonyms** RNF85; MGC:3310**Reactivity** Human, Mouse, Rat**Application** WB, FC**Recommended dilution** WB: 1:1000-1:5000

FC: 1:50

<b>Calculated MW</b>	60 kDa
<b>Observed MW</b>	60 kDa
<b>Host species</b>	Rabbit
<b>Clonality</b>	Monoclonal
<b>Clonality No.</b>	DGR15958
<b>Isotype</b>	IgG
<b>Purity</b>	Affinity Purification
<b>Conjugation</b>	Un-conjugated
<b>Storage Stability</b>	Store at -20°C. Supplied in 50mM Tris-Glycine(pH 7.4), 0.15M NaCl, 40% Glycerol, 0.01% sodium azide and 0.05% BSA. Stable for 12 months from date of receipt.



Western blot analysis of extracts from 293 cells using db14981 at 1:1000.