

Recombinant

DGRmAb®

eEF1A1 (DGR16028) Rabbit mAb

db11229

Package : 10µL 20µL 50µL 100µL

Product Name : eEF1A1 (DGR16028) Rabbit mAb**Cat.No.:** db11229**Synonyms** : CCS3; EF1A; PTI1; CCS-3; EE1A1; EEF-1; EEF1A; EF-Tu; LENG7; eEF1A-1; GRAF-1EF;
HNGC:16303**Application** : WB, IHC-P, ICC/IF, FC, IP**Reactivity** : Human,Mouse,Rat**Host species** : Rabbit**Background**

This gene encodes an isoform of the alpha subunit of the elongation factor-1 complex, which is responsible for the enzymatic delivery of aminoacyl tRNAs to the ribosome. This isoform (alpha 1) is expressed in brain, placenta, lung, liver, kidney, and pancreas, and the other isoform (alpha 2) is expressed in brain, heart and skeletal muscle. This isoform is identified as an autoantigen in 66% of patients with Felty syndrome. This gene has been found to have multiple copies on many chromosomes, some of which, if not all, represent different pseudogenes. [provided by RefSeq, Jul 2008]

Immunogen

A synthetic peptide of human eEF1A1

Gene ID

1915

Swiss Prot

P68104

SynonymsCCS3; EF1A; PTI1; CCS-3; EE1A1; EEF-1; EEF1A; EF-Tu; LENG7; eEF1A-1; GRAF-1EF;
HNGC:16303**Reactivity**

Human,Mouse,Rat

Application

WB, IHC-P, ICC/IF, FC, IP

Recommended dilutionWB: 1:2000-1:20000
IHC-P: 1:100
ICC/IF: 1:100
FC: 1:50
IP: 1:10-1:100**Calculated MW**

50 kDa

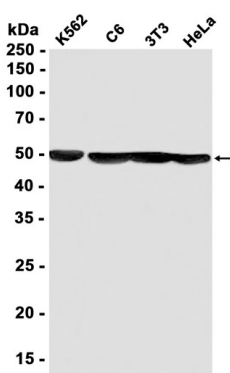
Observed MW

50 kDa

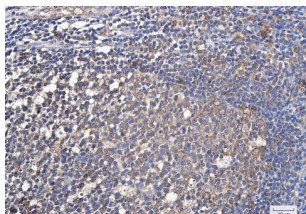
Host species

Rabbit

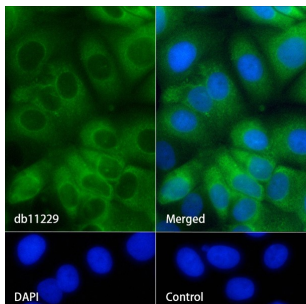
Clonality	Monoclonal
Clonality No.	DGR16028
Isotype	IgG
Purity	Affinity Purification
Conjugation	Un-conjugated
Storage Stability	Store at -20°C. Supplied in 50mM Tris-Glycine(pH 7.4), 0.15M NaCl, 40% Glycerol, 0.01% sodium azide and 0.05% BSA. Stable for 12 months from date of receipt.



Western blot analysis of extracts from K562, C6, 3T3, HeLa cells using db11229 at 1:1000.



Immunohistochemical analysis of paraffin-embedded human tonsil using db11229 antibody.



Immunofluorescence analysis of MCF-7 cells labelling eEF1A1 with db11229.

The cells were fixed with 4% PFA (10min, RT) followed by treatment with 0.1% Triton X-100 (10min, RT), and blocked in 1% BSA/10% normal goat serum/0.3M glycine in 0.1% PBS-Tween 20 for 1h. The cells were then incubate with db11229 (1:100) at room temprature for 1h, followed by a further incubation at room temperature for 45min with Goat Anti Rabbit IgG (H+L)-AF488 (db10005, shown in green). Nuclear DNA was labeled in blue with DAPI.

Control: Secondary antibody only.