

Recombinant

DGRmAb®

ERK1 (DGR16077) Rabbit mAb

db14725

Package : 10µL 20µL 50µL 100µL

Product Name : ERK1 (DGR16077) Rabbit mAb**Cat.No.:** db14725**Synonyms** : ERK1; ERT2; ERK-1; PRKM3; P44ERK1; P44MAPK; HS44KDAP; HUMKER1A; p44-ERK1; p44-MAPK**Application** : WB, IHC, ICC/IF, FC, IP**Reactivity** : Human, Mouse**Host species** : Rabbit**Background**

The protein encoded by this gene is a member of the MAP kinase family. MAP kinases, also known as extracellular signal-regulated kinases (ERKs), act in a signaling cascade that regulates various cellular processes such as proliferation, differentiation, and cell cycle progression in response to a variety of extracellular signals. This kinase is activated by upstream kinases, resulting in its translocation to the nucleus where it phosphorylates nuclear targets. Alternatively spliced transcript variants encoding different protein isoforms have been described. [provided by RefSeq, Jul 2008]

Immunogen

A synthetic peptide of human ERK1

Gene ID

5595

Swiss Prot

P27361

Synonyms

ERK1; ERT2; ERK-1; PRKM3; P44ERK1; P44MAPK; HS44KDAP; HUMKER1A; p44-ERK1; p44-MAPK

Reactivity

Human, Mouse

Application

WB, IHC, ICC/IF, FC, IP

Recommended dilutionWB: 1:1000
IHC: 1:50-1:200
ICC/IF: 1:200-1:500
FC: 1:50
IP: 1:20**Calculated MW**

43 kDa

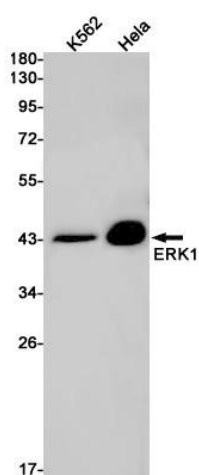
Observed MW

44 kDa

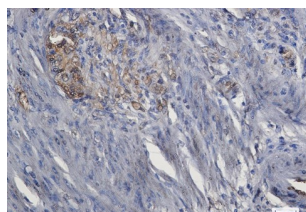
Host species

Rabbit

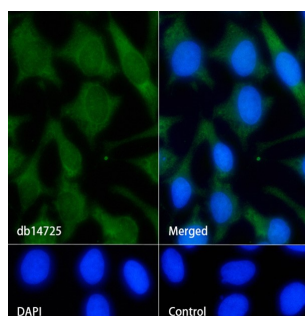
Clonality	Monoclonal
Clonality No.	DGR16077
Isotype	IgG
Purity	Affinity Purification
Conjugation	Un-conjugated
Storage Stability	Store at -20°C. Supplied in 50mM Tris-Glycine(pH 7.4), 0.15M NaCl, 40% Glycerol, 0.01% sodium azide and 0.05% BSA. Stable for 12 months from date of receipt.



Western blot detection of ERK1 in K562, HeLa cell lysates using ERK1 antibody (1:1000 diluted).



Immunohistochemical analysis of paraffin-embedded human colon cancer using db14725 antibody.



Immunofluorescence analysis of HeLa cells labelling ERK1 with db14725.

The cells were fixed with cold 100% methanol (10min, 4°C) and blocked in 1% BSA/10% normal goat serum/0.3M glycine in 0.1% PBS-Tween 20 for 1h. The cells were then incubated with db14725 (1:200) at room temperature for 1h, followed by a further incubation at room temperature for 45min with Goat Anti Rabbit IgG (H+L)-AF488 (db10005, shown in green). Nuclear DNA was labeled in blue with DAPI.

Control: Secondary antibody only.