

Recombinant

DGRmAb®

BACE1 (DGR16149) Rabbit mAb

db13283

Package : 10µL 20µL 50µL 100µL

Product Name : BACE1 (DGR16149) Rabbit mAb**Cat.No.:** db13283**Synonyms** : ASP2; Bace; C76936**Application** : WB, IHC-P, IP**Reactivity** : Human,Mouse,Rat**Host species** : Rabbit**Background**

This gene encodes a member of the peptidase A1 family of aspartic proteases. Alternative splicing results in multiple transcript variants, at least one of which encodes a preproprotein that is proteolytically processed to generate the mature protease. This transmembrane protease catalyzes the first step in the formation of amyloid beta peptide from amyloid precursor protein. Amyloid beta peptides are the main constituent of amyloid beta plaques, which accumulate in the brains of human Alzheimer's disease patients. Homozygous knockout mice for this gene exhibit a wide range of nervous system defects, growth retardation, metabolic abnormalities, and increased neonatal lethality. [provided by RefSeq, Nov 2015]

Immunogen

Recombinant protein of mouse BACE1

Gene ID

23821

Swiss Prot

P56818

Synonyms

ASP2; Bace; C76936

Reactivity

Human,Mouse,Rat

Application

WB, IHC-P, IP

Recommended dilution

WB: 1:1000

IHC-P: 1:50

IP: 1:50

Calculated MW

56 kDa

Observed MW

70 kDa

Host species

Rabbit

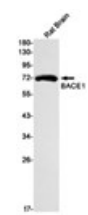
Clonality

Monoclonal

Clonality No.

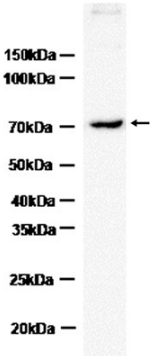
DGR16149

Isotype	IgG
Purity	Affinity Purification
Conjugation	Un-conjugated
Storage Stability	Store at -20°C. Supplied in 50mM Tris-Glycine(pH 7.4), 0.15M NaCl, 40% Glycerol, 0.01% sodium azide and 0.05% BSA. Stable for 12 months from date of receipt.



Western blot detection of BACE1 in Rat Brain lysates using BACE1 antibody(1:1000 diluted).

Mouse brain



Western blot analysis of extracts from Mouse brain tissue using db13283 at 1:1000.