

Recombinant

DGRmAb®

**Cyclin T1 (DGR16334) Rabbit mAb**

db12455

Package : 10µL 20µL 50µL 100µL

**Product Name** : Cyclin T1 (DGR16334) Rabbit mAb**Cat.No.:** db12455**Synonyms** : CCNT; CYCT1; HIVE1**Application** : WB, IHC-P, ICC/IF, FC, IP**Reactivity** : Human,Mouse,Rat**Host species** : Rabbit**Background**

This gene encodes a member of the highly conserved cyclin C subfamily. The encoded protein tightly associates with cyclin-dependent kinase 9, and is a major subunit of positive transcription elongation factor b (p-TEFb). In humans, there are multiple forms of positive transcription elongation factor b, which may include one of several different cyclins along with cyclin-dependent kinase 9. The complex containing the encoded cyclin and cyclin-dependent kinase 9 acts as a cofactor of human immunodeficiency virus type 1 (HIV-1) Tat protein, and is both necessary and sufficient for full activation of viral transcription. This cyclin and its kinase partner are also involved in triggering transcript elongation through phosphorylation of the carboxy-terminal domain of the largest RNA polymerase II subunit. Overexpression of this gene is implicated in tumor growth. Alternative splicing results in multiple transcript variants. [provided by RefSeq, Apr 2013]

**Immunogen**

Recombinant protein of human Cyclin T1

**Gene ID**

904

**Swiss Prot**

O60563

**Synonyms**

CCNT; CYCT1; HIVE1

**Reactivity**

Human,Mouse,Rat

**Application**

WB, IHC-P, ICC/IF, FC, IP

**Recommended dilution**WB: 1:1000  
IHC-P: 1:100-1:200  
ICC/IF: 1:200-1:500  
FC: 1:100  
IP: 1:20-1:50**Calculated MW**

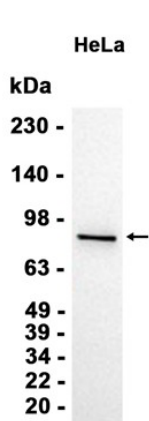
81 kDa

**Observed MW**

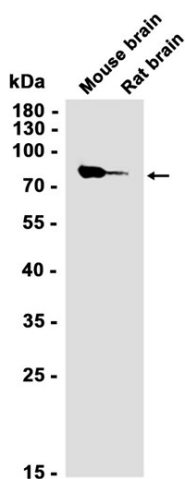
81 kDa

---

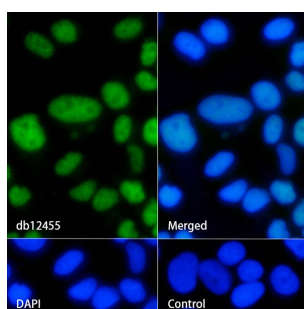
<b>Host species</b>	Rabbit
<b>Clonality</b>	Monoclonal
<b>Clonality No.</b>	DGR16334
<b>Isotype</b>	IgG
<b>Purity</b>	Affinity Purification
<b>Conjugation</b>	Un-conjugated
<b>Storage Stability</b>	Store at -20°C. Supplied in 50mM Tris-Glycine(pH 7.4), 0.15M NaCl, 40% Glycerol, 0.01% sodium azide and 0.05% BSA. Stable for 12 months from date of receipt.



Western blot analysis of extracts from HeLa cells using db12455 at 1:1000.



Western blot analysis of extracts from Mouse brain, Rat brain tissues using db12455 at 1:1000.



Immunofluorescence analysis of MCF-7 cells labelling Cyclin T1 with db12455.

The cells were fixed with 4% PFA (10min, RT) followed by treatment with 0.1% Triton X-100 (10min, RT), and blocked in 1% BSA/10% normal goat serum/0.3M glycine in 0.1% PBS-Tween 20 for 1h. The cells were then incubate with db12455 (1:200) at room temperature for 1h, followed by a further incubation at room temperature for 45min with Goat Anti Rabbit IgG (H+L)-AF488 (db10005, shown in green). Nuclear DNA was labeled in blue with DAPI.

Control: Secondary antibody only.