

Recombinant

DGRmAb®

beta 2 Microglobulin (DGR16359) Rabbit mAb

db13336

Package : 10μL 20μL 50μL 100μL

Product Name : beta 2 Microglobulin (DGR16359) Rabbit mAb**Cat.No.:** db13336**Synonyms** : IMD43**Application** : WB, IHC-P, FC, IP**Reactivity** : Human,Mouse,Rat**Host species** : Rabbit**Background**

This gene encodes a serum protein found in association with the major histocompatibility complex (MHC) class I heavy chain on the surface of nearly all nucleated cells. The protein has a predominantly beta-pleated sheet structure that can form amyloid fibrils in some pathological conditions. The encoded antimicrobial protein displays antibacterial activity in amniotic fluid. A mutation in this gene has been shown to result in hypercatabolic hypoproteinemia.[provided by RefSeq, Aug 2014]

Immunogen

Recombinant protein of human beta 2 Microglobulin

Gene ID

567

Swiss Prot

P61769

Synonyms

IMD43

Reactivity

Human,Mouse,Rat

Application

WB, IHC-P, FC, IP

Recommended dilutionWB: 1:1000
IHC-P: 1:500-1:2000
FC: 1:20-1:50
IP: 1:20-1:50**Calculated MW**

14 kDa

Observed MW

14 kDa

Host species

Rabbit

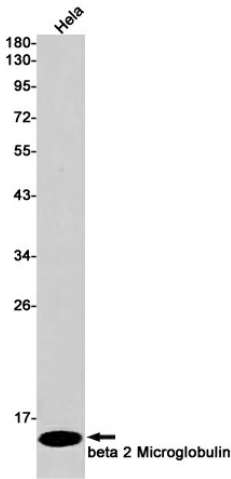
Clonality

Monoclonal

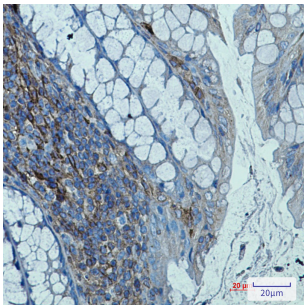
Clonality No.

DGR16359

Isotype	IgG
Purity	Affinity Purification
Conjugation	Un-conjugated
Storage Stability	Store at -20°C. Supplied in 50mM Tris-Glycine(pH 7.4), 0.15M NaCl, 40% Glycerol, 0.01% sodium azide and 0.05% BSA. Stable for 12 months from date of receipt.



Western blot detection of beta 2 Microglobulin in Hela cell lysates using beta 2 Microglobulin antibody(1:1000 diluted).



Immunohistochemical analysis of paraffin-embedded mouse colon using db13336 antibody.