

Recombinant

DGRmAb®

## C1QBP (DGR16415) Rabbit mAb

db11175

Package : 10µL 20µL 50µL 100µL

**Product Name :** C1QBP (DGR16415) Rabbit mAb**Cat.No.:** db11175**Synonyms :** p32; HABP1; gC1qR; GC1QBP; SF2p32; gC1Q-R; COXPD33**Application :** WB, IHC-P**Reactivity :** Human,Mouse,Rat**Host species :** Rabbit**Background**

The human complement subcomponent C1q associates with C1r and C1s in order to yield the first component of the serum complement system. The protein encoded by this gene is known to bind to the globular heads of C1q molecules and inhibit C1 activation. This protein has also been identified as the p32 subunit of pre-mRNA splicing factor SF2, as well as a hyaluronic acid-binding protein. [provided by RefSeq, Jul 2008]

**Immunogen**

A synthetic peptide of human C1QBP

**Gene ID**

708

**Swiss Prot**

Q07021

**Synonyms**

p32; HABP1; gC1qR; GC1QBP; SF2p32; gC1Q-R; COXPD33

**Reactivity**

Human,Mouse,Rat

**Application**

WB, IHC-P

**Recommended dilution**

WB: 1:1000-1:5000

IHC-P: 1:100-1:200

**Calculated MW**

31 kDa

**Observed MW**

31 kDa

**Host species**

Rabbit

**Clonality**

Monoclonal

**Clonality No.**

DGR16415

**Isotype**

IgG

**Purity**

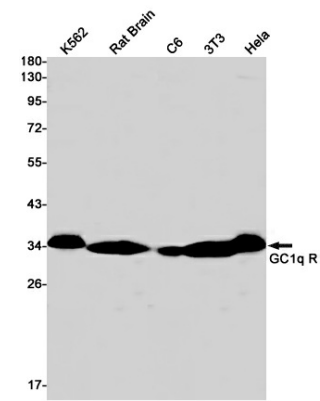
Affinity Purification

Conjugation

Un-conjugated

Storage Stability

Store at -20°C. Supplied in 50mM Tris-Glycine(pH 7.4), 0.15M NaCl, 40% Glycerol, 0.01% sodium azide and 0.05% BSA. Stable for 12 months from date of receipt.



Western blot detection of GC1q R in K562,Rat Brain,C6,3T3,Hela cell lysates using GC1q R antibody(1:1000 diluted).