

Recombinant

DGRmAb®

Lamin A/C (DGR17025) Rabbit mAb

db13193

Package : 10µL 20µL 50µL 100µL

Product Name : Lamin A/C (DGR17025) Rabbit mAb**Cat.No.:** db13193**Synonyms** : FPL; IDC; LFP; CDDC; EMD2; FPLD; HGPS; LDP1; LMN1; LMNC; MADA; PRO1; CDCD1; CMD1A; FPLD2; LMNL1; CMT2B1; LGMD1B**Application** : WB, IHC-P, ICC/IF, FC, IP**Reactivity** : Human,Mouse,Rat**Host species** : Rabbit**Background**

The nuclear lamina consists of a two-dimensional matrix of proteins located next to the inner nuclear membrane. The lamin family of proteins make up the matrix and are highly conserved in evolution. During mitosis, the lamina matrix is reversibly disassembled as the lamin proteins are phosphorylated. Lamin proteins are thought to be involved in nuclear stability, chromatin structure and gene expression. Vertebrate lamins consist of two types, A and B. Alternative splicing results in multiple transcript variants. Mutations in this gene lead to several diseases: Emery-Dreifuss muscular dystrophy, familial partial lipodystrophy, limb girdle muscular dystrophy, dilated cardiomyopathy, Charcot-Marie-Tooth disease, and Hutchinson-Gilford progeria syndrome. [provided by RefSeq, Apr 2012]

Immunogen

A synthetic peptide of human Lamin A/C

Gene ID

4000

Swiss Prot

P02545

Synonyms

FPL; IDC; LFP; CDDC; EMD2; FPLD; HGPS; LDP1; LMN1; LMNC; MADA; PRO1; CDCD1; CMD1A; FPLD2; LMNL1; CMT2B1; LGMD1B

Reactivity

Human,Mouse,Rat

Application

WB, IHC-P, ICC/IF, FC, IP

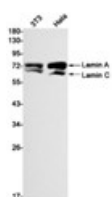
Recommended dilutionWB: 1:1000-1:5000
IHC-P: 1:100-1:200
ICC/IF: 1:100-1:200
FC: 1:20
IP: 1:10-1:100**Calculated MW**

74 kDa

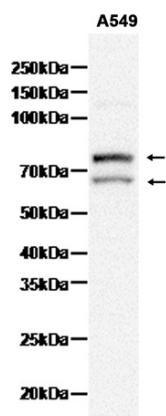
Observed MW

74,63 kDa

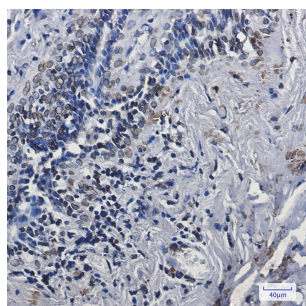
| | |
|-------------------|---|
| Host species | Rabbit |
| Clonality | Monoclonal |
| Clonality No. | DGR17025 |
| Isotype | IgG |
| Purity | Affinity Purification |
| Conjugation | Un-conjugated |
| Storage Stability | Store at -20°C. Supplied in 50mM Tris-Glycine(pH 7.4), 0.15M NaCl, 40% Glycerol, 0.01% sodium azide and 0.05% BSA. Stable for 12 months from date of receipt. |



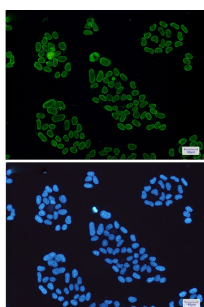
Western blot detection of Lamin A/C in 3T3, HeLa cell lysates using Lamin A/C antibody (1:1000 diluted).



Western blot analysis of extracts from A549 cells using db13193 at 1:1000.



Immunohistochemical analysis of paraffin-embedded human breast cancer using db13193 antibody.



Immunofluorescent analysis of HeLa cells using db13193 antibody (green), and DAPI (blue).