

Recombinant

DGRmAb®

## Cathepsin B (DGR18146) Rabbit mAb

db12432

Package : 10µL 20µL 50µL 100µL

**Product Name :** Cathepsin B (DGR18146) Rabbit mAb**Cat.No.:** db12432**Synonyms :** CB**Application :** WB, IHC-P, ICC/IF, FC**Reactivity :** Mouse,Rat**Host species :** Rabbit**Background**

This gene encodes a member of the peptidase C1 family and preproprotein that is proteolytically processed to generate multiple protein products. These products include the cathepsin B light and heavy chains, which can dimerize to generate the double chain form of the enzyme. This enzyme is a lysosomal cysteine protease with both endopeptidase and exopeptidase activity that may play a role in protein turnover. Homozygous knockout mice for this gene exhibit reduced pancreatic damage following induced pancreatitis and reduced hepatocyte apoptosis in a model of liver injury. Pseudogenes of this gene have been identified in the genome. [provided by RefSeq, Aug 2015]

**Immunogen**

Recombinant protein of mouse Cathepsin B

**Gene ID**

13030

**Swiss Prot**

P10605

**Synonyms**

CB

**Reactivity**

Mouse,Rat

**Application**

WB, IHC-P, ICC/IF, FC

**Recommended dilution**WB: 1:1000  
IHC-P: 1:200-1:1000  
ICC/IF: 1:100-1:200  
FC: 1:200-1:500**Calculated MW**

37 kDa

**Observed MW**

44,27,24 kDa

**Host species**

Rabbit

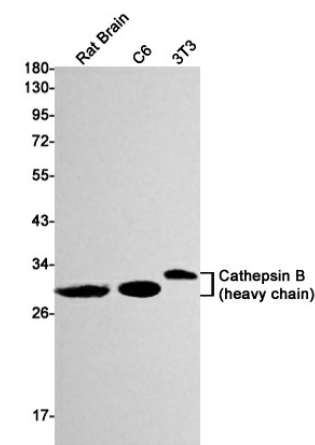
**Clonality**

Monoclonal

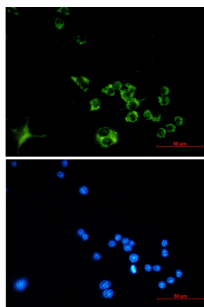
**Clonality No.**

DGR18146

Isotype	IgG
Purity	Affinity Purification
Conjugation	Un-conjugated
Storage Stability	Store at -20°C. Supplied in 50mM Tris-Glycine(pH 7.4), 0.15M NaCl, 40% Glycerol, 0.01% sodium azide and 0.05% BSA. Stable for 12 months from date of receipt.



Western blot detection of Cathepsin B in Rat Brain,C6,3T3 cell lysates using Cathepsin B antibody(1:1000 diluted).



Immunofluorescent analysis of Raw264.7 cells using db12432 antibody (green), and DAPI (blue).