

Recombinant

DGRmAb®

**KAP1 (DGR18382) Rabbit mAb**

db14397

Package : 10µL 20µL 50µL 100µL

**Product Name** : KAP1 (DGR18382) Rabbit mAb**Cat.No.:** db14397**Synonyms** : KAP1; TF1B; RNF96; TIF1B; PPP1R157**Application** : WB, IHC-P, ICC/IF**Reactivity** : Human,Mouse,Rat**Host species** : Rabbit**Background**

The protein encoded by this gene mediates transcriptional control by interaction with the Kruppel-associated box repression domain found in many transcription factors. The protein localizes to the nucleus and is thought to associate with specific chromatin regions. The protein is a member of the tripartite motif family. This tripartite motif includes three zinc-binding domains, a RING, a B-box type 1 and a B-box type 2, and a coiled-coil region. [provided by RefSeq, Jul 2008]

**Immunogen**

A synthetic peptide of human KAP1

**Gene ID**

10155

**Swiss Prot**

Q13263

**Synonyms**

KAP1; TF1B; RNF96; TIF1B; PPP1R157

**Reactivity**

Human,Mouse,Rat

**Application**

WB, IHC-P, ICC/IF

**Recommended dilution**

WB: 1:1000-1:5000

IHC-P: 1:200-1:500

ICC/IF: 1:100-1:200

**Calculated MW**

89 kDa

**Observed MW**

100 kDa

**Host species**

Rabbit

**Clonality**

Monoclonal

**Clonality No.**

DGR18382

**Isotype**

IgG

**Purity**

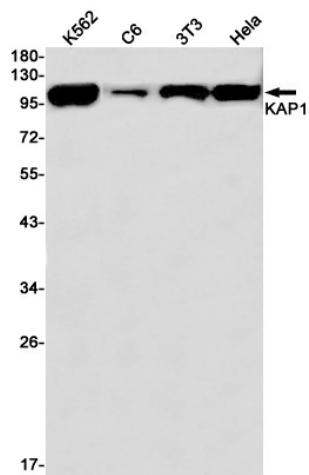
Affinity Purification

**Conjugation**

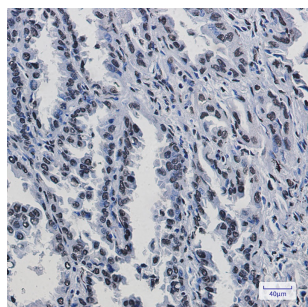
Un-conjugated

**Storage Stability**

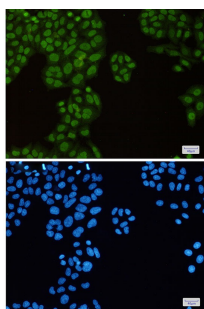
Store at -20°C. Supplied in 50mM Tris-Glycine(pH 7.4), 0.15M NaCl, 40% Glycerol, 0.01% sodium azide and 0.05% BSA. Stable for 12 months from date of receipt.



Western blot detection of KAP1 in K562, C6, 3T3, HeLa cell lysates using KAP1 antibody(1:1000 diluted).



Immunohistochemical analysis of paraffin-embedded human lung cancer using db14397 antibody.



Immunofluorescent analysis of HeLa cells using db14397 antibody (green), and DAPI (blue).