

Recombinant

DGRmAb®

IGF2BP1 (DGR18432) Rabbit mAb

db13135

Package : 10µL 20µL 50µL 100µL

Product Name : IGF2BP1 (DGR18432) Rabbit mAb**Cat.No.:** db13135**Synonyms :** IMP1; ZBP1; CRDBP; IMP-1; CRD-BP; VICKZ1**Application :** WB, IHC-P, IP**Reactivity :** Human**Host species :** Rabbit**Background**

This gene encodes a member of the insulin-like growth factor 2 mRNA-binding protein family. The protein encoded by this gene contains four K homology domains and two RNA recognition motifs. It functions by binding to the mRNAs of certain genes, including insulin-like growth factor 2, beta-actin and beta-transducin repeat-containing protein, and regulating their translation. Two transcript variants encoding different isoforms have been found for this gene. [provided by RefSeq, May 2009]

Immunogen

Recombinant protein of human IGF2BP1

Gene ID

10642

Swiss Prot

Q9NZI8

Synonyms

IMP1; ZBP1; CRDBP; IMP-1; CRD-BP; VICKZ1

Reactivity

Human

Application

WB, IHC-P, IP

Recommended dilutionWB: 1:1000
IHC-P: 1:500-1:2000
IP: 1:20-1:50**Calculated MW**

64 kDa

Observed MW

64 kDa

Host species

Rabbit

Clonality

Monoclonal

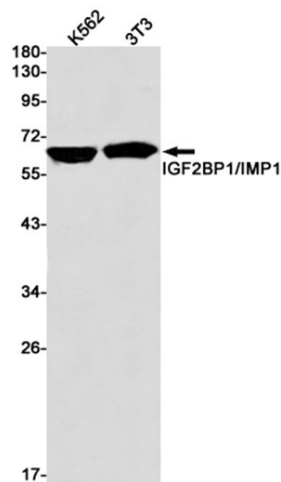
Clonality No.

DGR18432

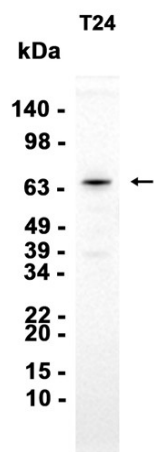
Isotype

IgG

| | |
|-------------------|---|
| Purity | Affinity Purification |
| Conjugation | Un-conjugated |
| Storage Stability | Store at -20°C. Supplied in 50mM Tris-Glycine(pH 7.4), 0.15M NaCl, 40% Glycerol, 0.01% sodium azide and 0.05% BSA. Stable for 12 months from date of receipt. |



Western blot detection of IGF2BP1 in K562,3T3 cell lysates using IGF2BP1 antibody(1:1000 diluted).



Western blot analysis of extracts from T24 cells using db13135 at 1:1000.