

Recombinant

DGRmAb®

Tau (DGR18510) Rabbit mAb

db13107

Package : 10µL 20µL 50µL 100µL

Product Name : Tau (DGR18510) Rabbit mAb**Cat.No.:** db13107**Synonyms** : TAU; MSTD; PPND; DDPAC; MAPTL; MTBT1; MTBT2; FTDP-17; PPP1R103**Application** : WB, ICC/IF, FC**Reactivity** : Human,Mouse,Rat**Host species** : Rabbit**Background**

This gene encodes the microtubule-associated protein tau (MAPT) whose transcript undergoes complex, regulated alternative splicing, giving rise to several mRNA species. MAPT transcripts are differentially expressed in the nervous system, depending on stage of neuronal maturation and neuron type. MAPT gene mutations have been associated with several neurodegenerative disorders such as Alzheimer's disease, Pick's disease, frontotemporal dementia, cortico-basal degeneration and progressive supranuclear palsy. [provided by RefSeq, Jul 2008]

Immunogen

A synthetic peptide of human Tau

Gene ID

4137

Swiss Prot

P10636

Synonyms

TAU; MSTD; PPND; DDPAC; MAPTL; MTBT1; MTBT2; FTDP-17; PPP1R103

Reactivity

Human,Mouse,Rat

Application

WB, ICC/IF, FC

Recommended dilution

WB: 1:1000-1:5000

ICC/IF: 1:50

FC: 1:200-1:500

Calculated MW

79 kDa

Observed MW

50-80 kDa

Host species

Rabbit

Clonality

Monoclonal

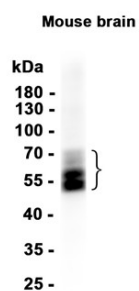
Clonality No.

DGR18510

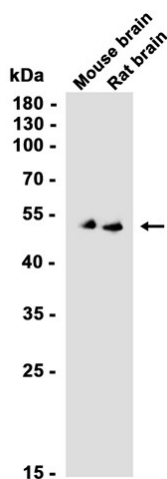
Isotype

IgG

Purity	Affinity Purification
Conjugation	Un-conjugated
Storage Stability	Store at -20°C. Supplied in 50mM Tris-Glycine(pH 7.4), 0.15M NaCl, 40% Glycerol, 0.01% sodium azide and 0.05% BSA. Stable for 12 months from date of receipt.



Western blot analysis of extracts from Mouse brain tissue using db13107 at 1:1000.



Western blot analysis of extracts from Mouse brain, Rat brain tissues using db13107 at 1:1000.