

Recombinant

DGRmAb®

67kDa Laminin Receptor (DGR18660) Rabbit mAb

db12284

Package : 10μL 20μL 50μL 100μL

Product Name : 67kDa Laminin Receptor (DGR18660) Rabbit mAb**Cat.No.:** db12284**Synonyms** : SA; LBP; LRP; p40; 67LR; ICAS; lamR; 37LRP; LAMBR; LAMR1; LRP/LR; LBP/p40; NEM/1CHD4**Application** : WB, IHC-P, ICC/IF, FC, IP**Reactivity** : Human, Mouse, Rat**Host species** : Rabbit**Background**

Laminins, a family of extracellular matrix glycoproteins, are the major noncollagenous constituent of basement membranes. They have been implicated in a wide variety of biological processes including cell adhesion, differentiation, migration, signaling, neurite outgrowth and metastasis. Many of the effects of laminin are mediated through interactions with cell surface receptors. These receptors include members of the integrin family, as well as non-integrin laminin-binding proteins. This gene encodes a high-affinity, non-integrin family, laminin receptor 1. This receptor has been variously called 67 kD laminin receptor, 37 kD laminin receptor precursor (37LRP) and p40 ribosome-associated protein. The amino acid sequence of laminin receptor 1 is highly conserved through evolution, suggesting a key biological function. It has been observed that the level of the laminin receptor transcript is higher in colon carcinoma tissue and lung cancer cell line than their normal counterparts. Also, there is a correlation between the upregulation of this polypeptide in cancer cells and their invasive and metastatic phenotype. Multiple copies of this gene exist, however, most of them are pseudogenes thought to have arisen from retropositional events. Two alternatively spliced transcript variants encoding the same protein have been found for this gene. [provided by RefSeq, Jul 2008]

Immunogen

A synthetic peptide of human 67kDa Laminin Receptor

Gene ID

3921

Swiss Prot

P08865

Synonyms

SA; LBP; LRP; p40; 67LR; ICAS; lamR; 37LRP; LAMBR; LAMR1; LRP/LR; LBP/p40; NEM/1CHD4

Reactivity

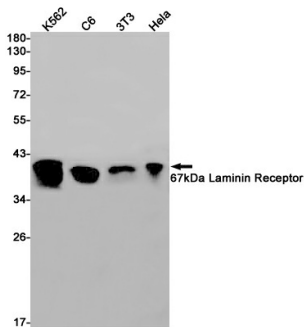
Human, Mouse, Rat

Application

WB, IHC-P, ICC/IF, FC, IP

Recommended dilutionWB: 1:1000-1:5000
IHC-P: 1:100-1:200

	ICC/IF: 1:100-1:200
	FC: 1:200-1:2000
	IP: 1:10-1:100
Calculated MW	33 kDa
Observed MW	40 kDa
Host species	Rabbit
Clonality	Monoclonal
Clonality No.	DGR18660
Isotype	IgG
Purity	Affinity Purification
Conjugation	Un-conjugated
Storage Stability	Store at -20°C. Supplied in 50mM Tris-Glycine(pH 7.4), 0.15M NaCl, 40% Glycerol, 0.01% sodium azide and 0.05% BSA. Stable for 12 months from date of receipt.



Western blot detection of 67kDa Laminin Receptor in K562,C6,3T3,Hela cell lysates using 67kDa Laminin Receptor antibody(1:1000 diluted).