

Recombinant

DGRmAb®

GPD2 (DGR18751) Rabbit mAb

db11888

Package : 10μL 20μL 50μL 100μL

Product Name : GPD2 (DGR18751) Rabbit mAb**Cat.No.:** db11888**Synonyms :** GDH2; GPDM; mGPDH**Application :** WB, FC, IP**Reactivity :** Human,Mouse,Rat**Host species :** Rabbit**Background**

The protein encoded by this gene localizes to the inner mitochondrial membrane and catalyzes the conversion of glycerol-3-phosphate to dihydroxyacetone phosphate, using FAD as a cofactor. Along with GDP1, the encoded protein constitutes the glycerol phosphate shuttle, which reoxidizes NADH formed during glycolysis. Two transcript variants encoding the same protein have been found for this gene.[provided by RefSeq, Jan 2010]

Immunogen

A synthetic peptide of human GPD2

Gene ID

2820

Swiss Prot

P43304

Synonyms

GDH2; GPDM; mGPDH

Reactivity

Human,Mouse,Rat

Application

WB, FC, IP

Recommended dilution

WB: 1:1000-1:5000

FC: 1:200-1:500

IP: 1:20-1:50

Calculated MW

81 kDa

Observed MW

81 kDa

Host species

Rabbit

Clonality

Monoclonal

Clonality No.

DGR18751

Isotype

IgG

Purity

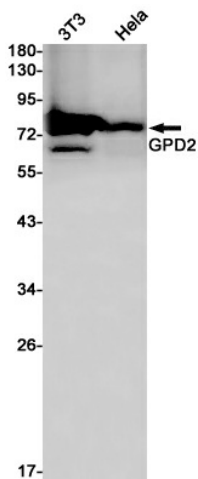
Affinity Purification

Conjugation

Un-conjugated

Storage Stability

Store at -20°C. Supplied in 50mM Tris-Glycine(pH 7.4), 0.15M NaCl, 40% Glycerol, 0.01% sodium azide and 0.05% BSA. Stable for 12 months from date of receipt.



Western blot detection of GPD2 in K562, HeLa cell lysates using GPD2 antibody(1:1000 diluted).