

Recombinant

DGRmAb®

eIF4E (DGR18881) Rabbit mAb

db11590

Package : 10µL 20µL 50µL 100µL

Product Name : eIF4E (DGR18881) Rabbit mAb**Cat.No.:** db11590**Synonyms :** CBP; EIF4F; AUTS19; EIF4E1; eIF-4E; EIF4EL1**Application :** WB, IHC, ICC/IF, FC, IP**Reactivity :** Human, Mouse, Rat**Host species :** Rabbit**Background**

The protein encoded by this gene is a component of the eukaryotic translation initiation factor 4F complex, which recognizes the 7-methylguanosine cap structure at the 5' end of messenger RNAs. The encoded protein aids in translation initiation by recruiting ribosomes to the 5'-cap structure. Association of this protein with the 4F complex is the rate-limiting step in translation initiation. This gene acts as a proto-oncogene, and its expression and activation is associated with transformation and tumorigenesis. Several pseudogenes of this gene are found on other chromosomes. Alternative splicing results in multiple transcript variants. [provided by RefSeq, Sep 2015]

Immunogen

A synthetic peptide of human eIF4E

Gene ID

1977

Swiss Prot

P06730

Synonyms

CBP; EIF4F; AUTS19; EIF4E1; eIF-4E; EIF4EL1

Reactivity

Human, Mouse, Rat

Application

WB, IHC, ICC/IF, FC, IP

Recommended dilution

WB: 1:1000

IHC: 1:200-1:500

ICC/IF: 1:50

FC: 1:50

IP: 1:20

Calculated MW

25 kDa

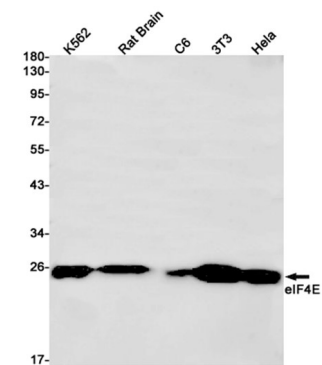
Observed MW

25 kDa

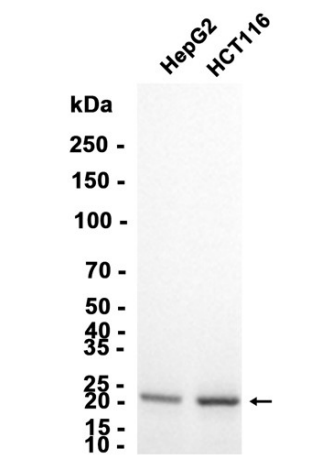
Host species

Rabbit

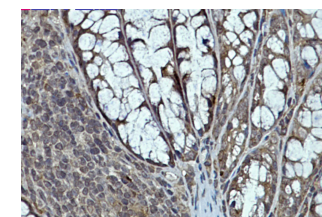
Clonality	Monoclonal
Clonality No.	DGR18881
Isotype	IgG
Purity	Affinity Purification
Conjugation	Un-conjugated
Storage Stability	Store at -20°C. Supplied in 50mM Tris-Glycine(pH 7.4), 0.15M NaCl, 40% Glycerol, 0.01% sodium azide and 0.05% BSA. Stable for 12 months from date of receipt.



Western blot detection of eIF4E in K562,Rat Brain,C6,3T3,HeLa cell lysates using eIF4E antibody(1:1000 diluted).



Western blot analysis of extracts from HepG2, HCT116 cells using db11590 at 1:5000.



Immunohistochemical analysis of paraffin-embedded mouse colon using db11590 antibody.