

Recombinant

DGRmAb®

## alpha Sarcoglycan (DGR18906) Rabbit mAb

db14470

Package : 10µL 20µL 50µL 100µL

**Product Name** : alpha Sarcoglycan (DGR18906) Rabbit mAb

**Cat.No.:** db14470

**Synonyms** : ADL; DAG2; 50DAG; DMDA2; LGMD2D; SCARMD1; adhalin

**Application** : WB, IHC-P, IP

**Reactivity** : Human,Mouse,Rat

**Host species** : Rabbit

### Background

This gene encodes a component of the dystrophin-glycoprotein complex (DGC), which is critical to the stability of muscle fiber membranes and to the linking of the actin cytoskeleton to the extracellular matrix. Its expression is thought to be restricted to striated muscle. Mutations in this gene result in type 2D autosomal recessive limb-girdle muscular dystrophy. Multiple transcript variants encoding different isoforms have been found for this gene. [provided by RefSeq, Oct 2008]

### Immunogen

A synthetic peptide of human alpha Sarcoglycan

### Gene ID

6442

### Swiss Prot

Q16586

### Synonyms

ADL; DAG2; 50DAG; DMDA2; LGMD2D; SCARMD1; adhalin

### Reactivity

Human,Mouse,Rat

### Application

WB, IHC-P, IP

### Recommended dilution

WB: 1:1000-1:5000

IHC-P: 1:500-1:2000

IP: 1:20-1:50

### Calculated MW

43 kDa

### Observed MW

50 kDa

### Host species

Rabbit

### Clonality

Monoclonal

### Clonality No.

DGR18906

### Isotype

IgG

### Purity

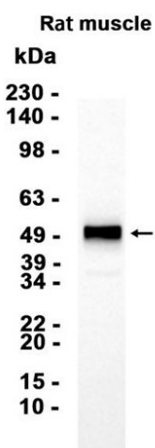
Affinity Purification

**Conjugation**

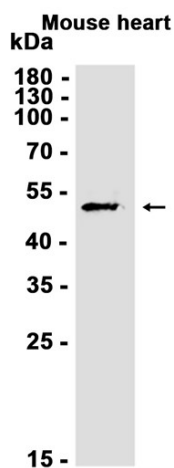
Un-conjugated

**Storage Stability**

Store at -20°C. Supplied in 50mM Tris-Glycine(pH 7.4), 0.15M NaCl, 40% Glycerol, 0.01% sodium azide and 0.05% BSA. Stable for 12 months from date of receipt.



Western blot analysis of extracts from Rat muscle tissue using db14470 at 1:1000.



Western blot analysis of extracts from Mouse heart tissue using db14470 at 1:1000.