

Recombinant

DGRmAb®

ATF2 (DGR19012) Rabbit mAb

db12625

Package : 10µL 20µL 50µL 100µL

Product Name : ATF2 (DGR19012) Rabbit mAb**Cat.No.:** db12625**Synonyms** : HB16; CREB2; TREB7; CREB-2; CRE-BP1**Application** : WB, IHC-P, IP**Reactivity** : Human**Host species** : Rabbit**Background**

This gene encodes a transcription factor that is a member of the leucine zipper family of DNA binding proteins. The encoded protein has been identified as a moonlighting protein based on its ability to perform mechanistically distinct functions. This protein binds to the cAMP-responsive element (CRE), an octameric palindrome. It forms a homodimer or a heterodimer with c-Jun and stimulates CRE-dependent transcription. This protein is also a histone acetyltransferase (HAT) that specifically acetylates histones H2B and H4 in vitro; thus it may represent a class of sequence-specific factors that activate transcription by direct effects on chromatin components. The encoded protein may also be involved in cell's DNA damage response independent of its role in transcriptional regulation. Several alternatively spliced transcript variants have been found for this gene [provided by RefSeq, Jan 2014]

Immunogen

A synthetic peptide of human ATF2

Gene ID

1386

Swiss Prot

P15336

Synonyms

HB16; CREB2; TREB7; CREB-2; CRE-BP1

Reactivity

Human

Application

WB, IHC-P, IP

Recommended dilutionWB: 1:1000-1:5000
IHC-P: 1:100
IP: 1:20-1:50**Calculated MW**

55 kDa

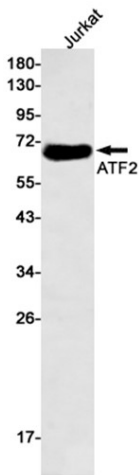
Observed MW

70 kDa

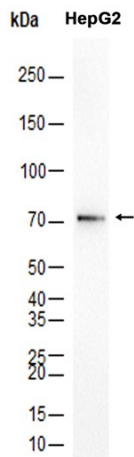
Host species

Rabbit

Clonality	Monoclonal
Clonality No.	DGR19012
Isotype	IgG
Purity	Affinity Purification
Conjugation	Un-conjugated
Storage Stability	Store at -20°C. Supplied in 50mM Tris-Glycine(pH 7.4), 0.15M NaCl, 40% Glycerol, 0.01% sodium azide and 0.05% BSA. Stable for 12 months from date of receipt.



Western blot detection of ATF2 in Jurkat cell lysates using ATF2 antibody(1:500 diluted).



Western blot analysis of extracts from HepG2 cells using db12625 at 1:2000.