

Recombinant

DGRmAb®

ADRM1 (DGR19050) Rabbit mAb

db12715

Package : 10µL 20µL 50µL 100µL

Product Name : ADRM1 (DGR19050) Rabbit mAb**Cat.No.:** db12715**Synonyms :** ARM1; ARM-1; GP110**Application :** WB, IHC-P, ICC/IF, FC, IP**Reactivity :** Human**Host species :** Rabbit**Background**

This gene encodes a member of the adhesion regulating molecule 1 protein family. The encoded protein is a component of the proteasome where it acts as a ubiquitin receptor and recruits the deubiquitinating enzyme, ubiquitin carboxyl-terminal hydrolase L5. Increased levels of the encoded protein are associated with increased cell adhesion, which is likely an indirect effect of this intracellular protein. Dysregulation of this gene has been implicated in carcinogenesis. Alternative splicing results in multiple transcript variants. [provided by RefSeq, Jul 2013]

Immunogen

A synthetic peptide of human ADRM1

Gene ID

11047

Swiss Prot

Q16186

Synonyms

ARM1; ARM-1; GP110

Reactivity

Human

Application

WB, IHC-P, ICC/IF, FC, IP

Recommended dilution

WB: 1:2000-1:20000

IHC-P: 1:50-1:100

ICC/IF: 1:500-1:1000

FC: 1:50-1:100

IP: 1:10-1:100

Calculated MW

42 kDa

Observed MW

42 kDa

Host species

Rabbit

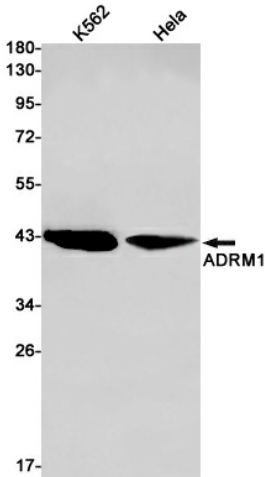
Clonality

Monoclonal

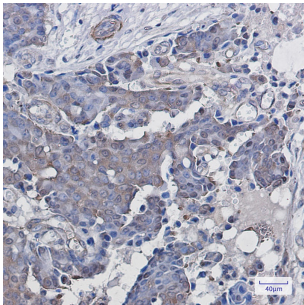
Clonality No.

DGR19050

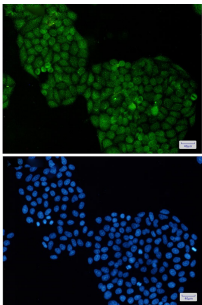
Isotype	IgG
Purity	Affinity Purification
Conjugation	Un-conjugated
Storage Stability	Store at -20°C. Supplied in 50mM Tris-Glycine(pH 7.4), 0.15M NaCl, 40% Glycerol, 0.01% sodium azide and 0.05% BSA. Stable for 12 months from date of receipt.



Western blot detection of ADRM1 in K562,HeLa cell lysates using ADRM1 antibody(1:1000 diluted).



Immunohistochemical analysis of paraffin-embedded human breast cancer using db12715 antibody.



Immunofluorescent analysis of HeLa cells using db12715 antibody (green), and DAPI (blue).