

Recombinant

DGRmAb®

## Lumican (DGR19074) Rabbit mAb

db13159

Package : 10µL 20µL 50µL 100µL

**Product Name** : Lumican (DGR19074) Rabbit mAb**Cat.No.:** db13159**Synonyms** : LDC; SLRR2D**Application** : WB, IHC-P, ICC/IF, FC**Reactivity** : Human,Mouse,Rat**Host species** : Rabbit**Background**

This gene encodes a member of the small leucine-rich proteoglycan (SLRP) family that includes decorin, biglycan, fibromodulin, keratocan, epiphykan, and osteoglycin. In these bifunctional molecules, the protein moiety binds collagen fibrils and the highly charged hydrophilic glycosaminoglycans regulate interfibrillar spacings. Lumican is the major keratan sulfate proteoglycan of the cornea but is also distributed in interstitial collagenous matrices throughout the body. Lumican may regulate collagen fibril organization and circumferential growth, corneal transparency, and epithelial cell migration and tissue repair. [provided by RefSeq, Jul 2008]

**Immunogen**

A synthetic peptide of human Lumican

**Gene ID**

4060

**Swiss Prot**

P51884

**Synonyms**

LDC; SLRR2D

**Reactivity**

Human,Mouse,Rat

**Application**

WB, IHC-P, ICC/IF, FC

**Recommended dilution**

WB: 1:1000-1:5000

IHC-P: 1:50-1:100

ICC/IF: 1:200-1:500

FC: 1:100-1:200

**Calculated MW**

38 kDa

**Observed MW**

60 kDa

**Host species**

Rabbit

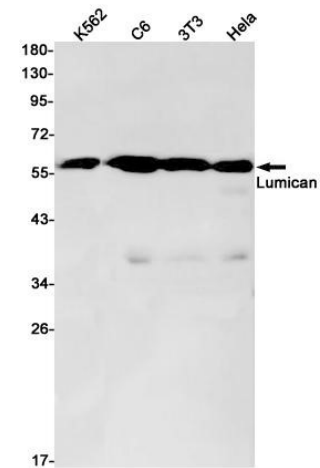
**Clonality**

Monoclonal

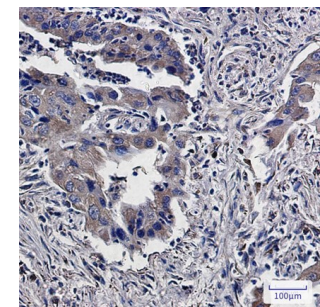
**Clonality No.**

DGR19074

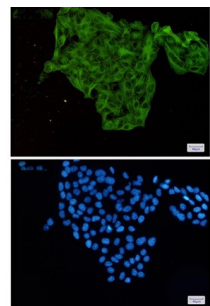
|                   |                                                                                                                                                               |
|-------------------|---------------------------------------------------------------------------------------------------------------------------------------------------------------|
| Isotype           | IgG                                                                                                                                                           |
| Purity            | Affinity Purification                                                                                                                                         |
| Conjugation       | Un-conjugated                                                                                                                                                 |
| Storage Stability | Store at -20°C. Supplied in 50mM Tris-Glycine(pH 7.4), 0.15M NaCl, 40% Glycerol, 0.01% sodium azide and 0.05% BSA. Stable for 12 months from date of receipt. |



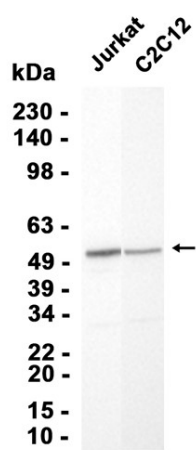
Western blot detection of Lumican in K562,C6,3T3,HeLa cell lysates using Lumican antibody(1:1000 diluted).



Immunohistochemical analysis of paraffin-embedded human lung cancer using db13159 antibody.



Immunofluorescent analysis of HeLa cells using db13159 antibody (green), and DAPI (blue).



Western blot analysis of extracts from Jurkat, C2C12 cells using db13159 at 1:1000.