

Recombinant

DGRmAb®

DCI (DGR19369) Rabbit mAb

db13373

Package : 10µL 20µL 50µL 100µL

Product Name : DCI (DGR19369) Rabbit mAb**Cat.No.:** db13373**Synonyms** : DCI**Application** : WB, IHC-P, ICC/IF, FC**Reactivity** : Human,Mouse,Rat**Host species** : Rabbit**Background**

This gene encodes a member of the hydratase/isomerase superfamily. The protein encoded is a key mitochondrial enzyme involved in beta-oxidation of unsaturated fatty acids. It catalyzes the transformation of 3-cis and 3-trans-enoyl-CoA esters arising during the stepwise degradation of cis-, mono-, and polyunsaturated fatty acids to the 2-trans-enoyl-CoA intermediates. Alternatively spliced transcript variants have been described. [provided by RefSeq, May 2010]

Immunogen

A synthetic peptide of human DCI

Gene ID

1632

Swiss Prot

P42126

Synonyms

DCI

Reactivity

Human,Mouse,Rat

Application

WB, IHC-P, ICC/IF, FC

Recommended dilution

WB: 1:2000-1:20000

IHC-P: 1:50-1:100

ICC/IF: 1:100

FC: 1:100-1:200

Calculated MW

33 kDa

Observed MW

33 kDa

Host species

Rabbit

Clonality

Monoclonal

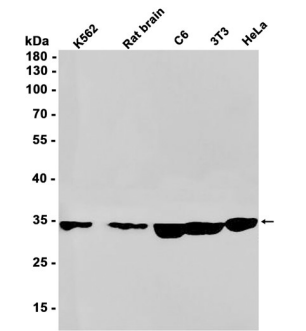
Clonality No.

DGR19369

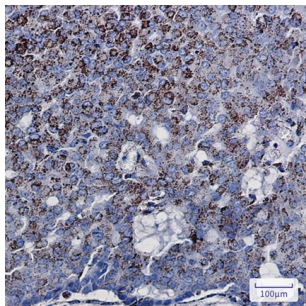
Isotype

IgG

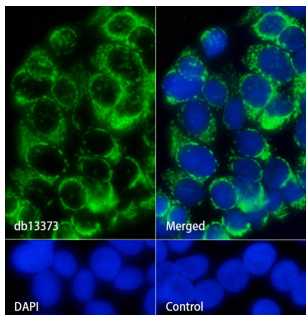
Purity	Affinity Purification
Conjugation	Un-conjugated
Storage Stability	Store at -20°C. Supplied in 50mM Tris-Glycine(pH 7.4), 0.15M NaCl, 40% Glycerol, 0.01% sodium azide and 0.05% BSA. Stable for 12 months from date of receipt.



Western blot analysis of extracts from K562, C6, 3T3, HeLa cells and Rat brain tissue using db13373 at 1:1000.



Immunohistochemical analysis of paraffin-embedded human breast cancer using db13373 antibody.



Immunofluorescence analysis of MCF-7 cells labelling DCI with db13373.

The cells were fixed with cold 100% methanol (10min, 4°C) and blocked in 1% BSA/10% normal goat serum/0.3M glycine in 0.1% PBS-Tween 20 for 1h. The cells were then incubate with db13373 (1:100) at room temprature for 1h, followed by a further incubation at room temperature for 45min with Goat Anti Rabbit IgG (H+L)-AF488 (db10005, shown in green). Nuclear DNA was labeled in blue with DAPI.

Control: Secondary antibody only.