

Recombinant

DGRmAb®

STAT1 (DGR19370) Rabbit mAb

db12458

Package : 10µL 20µL 50µL 100µL

Product Name : STAT1 (DGR19370) Rabbit mAb**Cat.No.:** db12458**Synonyms :** CANDF7; IMD31A; IMD31B; IMD31C; ISGF-3; STAT91**Application :** WB, IHC-P, ICC/IF, FC, IP**Reactivity :** Human**Host species :** Rabbit**Background**

The protein encoded by this gene is a member of the STAT protein family. In response to cytokines and growth factors, STAT family members are phosphorylated by the receptor associated kinases, and then form homo- or heterodimers that translocate to the cell nucleus where they act as transcription activators. This protein can be activated by various ligands including interferon-alpha, interferon-gamma, EGF, PDGF and IL6. This protein mediates the expression of a variety of genes, which is thought to be important for cell viability in response to different cell stimuli and pathogens. Two alternatively spliced transcript variants encoding distinct isoforms have been described. [provided by RefSeq, Jul 2008]

Immunogen

A synthetic peptide of human STAT1

Gene ID

6772

Swiss Prot

P42224

Synonyms

CANDF7; IMD31A; IMD31B; IMD31C; ISGF-3; STAT91

Reactivity

Human

Application

WB, IHC-P, ICC/IF, FC, IP

Recommended dilution

WB: 1:2000-1:20000

IHC-P: 1:100-1:200

ICC/IF: 1:100-1:200

FC: 1:1000

IP: 1:10-1:100

Calculated MW

87 kDa

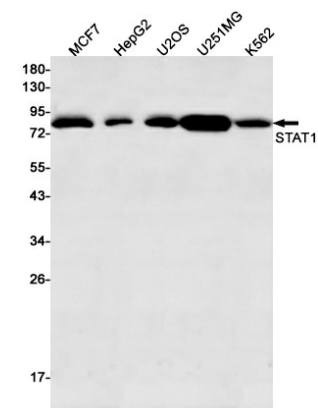
Observed MW

87 kDa

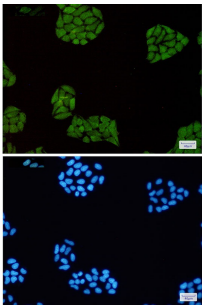
Host species

Rabbit

Clonality	Monoclonal
Clonality No.	DGR19370
Isotype	IgG
Purity	Affinity Purification
Conjugation	Un-conjugated
Storage Stability	Store at -20°C. Supplied in 50mM Tris-Glycine(pH 7.4), 0.15M NaCl, 40% Glycerol, 0.01% sodium azide and 0.05% BSA. Stable for 12 months from date of receipt.



Western blot detection of STAT1 in MCF7, HepG2, U2OS, U251MG, K562 cell lysates using STAT1 antibody (1:500 diluted).



Immunofluorescent analysis of HeLa cells using db12458 antibody (green), and DAPI (blue).