

Recombinant

DGRmAb®

LAMP2A (DGR19373) Rabbit mAb

db14575

Package : 10µL 20µL 50µL 100µL

Product Name : LAMP2A (DGR19373) Rabbit mAb**Cat.No.:** db14575**Synonyms** : LAMPB; CD107b; LAMP-2; LGP-96; LGP110**Application** : WB, IHC, FC, IP**Reactivity** : Human, Mouse, Rat**Host species** : Rabbit**Background**

The protein encoded by this gene is a member of a family of membrane glycoproteins. This glycoprotein provides selectins with carbohydrate ligands. It may play a role in tumor cell metastasis. It may also function in the protection, maintenance, and adhesion of the lysosome. Alternative splicing of this gene results in multiple transcript variants encoding distinct proteins. [provided by RefSeq, Jul 2008]

Immunogen

A synthetic peptide of human LAMP2A

Gene ID

3920

Swiss Prot

P13473

Synonyms

LAMPB; CD107b; LAMP-2; LGP-96; LGP110

Reactivity

Human, Mouse, Rat

Application

WB, IHC, FC, IP

Recommended dilution

WB: 1:1000

IHC: 1:20-1:100

FC: 1:200

IP: 1:20

Calculated MW

45 kDa

Observed MW

110 kDa

Host species

Rabbit

Clonality

Monoclonal

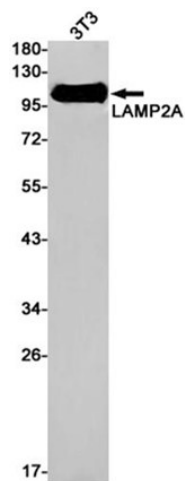
Clonality No.

DGR19373

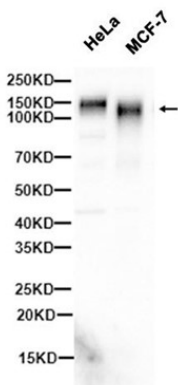
Isotype

IgG

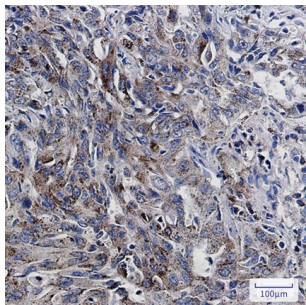
Purity	Affinity Purification
Conjugation	Un-conjugated
Storage Stability	Store at -20°C. Supplied in 50mM Tris-Glycine(pH 7.4), 0.15M NaCl, 40% Glycerol, 0.01% sodium azide and 0.05% BSA. Stable for 12 months from date of receipt.



Western blot detection of LAMP2A in 3T3 cell lysates using LAMP2A antibody(1:1000 diluted).



Western blot analysis of extracts from HeLa,MCF-7 cells using db14575 at 1:1000.



Immunohistochemical analysis of paraffin-embedded human lung cancer using db14575 antibody.