

Recombinant

DGRmAb®

SPON2 (DGR19384) Rabbit mAb

db13002

Package : 10µL 20µL 50µL 100µL

Product Name : SPON2 (DGR19384) Rabbit mAb**Cat.No.:** db13002**Synonyms :** DIL1; DIL-1; MINDIN; M-SPONDIN**Application :** WB**Reactivity :** Human,Mouse**Host species :** Rabbit**Background**

Cell adhesion protein that promotes adhesion and outgrowth of hippocampal embryonic neurons. Binds directly to bacteria and their components and functions as an opsonin for macrophage phagocytosis of bacteria. Essential in the initiation of the innate immune response and represents a unique pattern-recognition molecule in the ECM for microbial pathogens (By similarity). Binds bacterial lipopolysaccharide (LPS).

Immunogen

A synthetic peptide of human SPON2

Gene ID

10417

Swiss Prot

Q9BUD6

Synonyms

DIL1; DIL-1; MINDIN; M-SPONDIN

Reactivity

Human,Mouse

Application

WB

Recommended dilution

WB: 1:1000-1:5000

Calculated MW

36 kDa

Observed MW

36 kDa

Host species

Rabbit

Clonality

Monoclonal

Clonality No.

DGR19384

Isotype

IgG

Purity

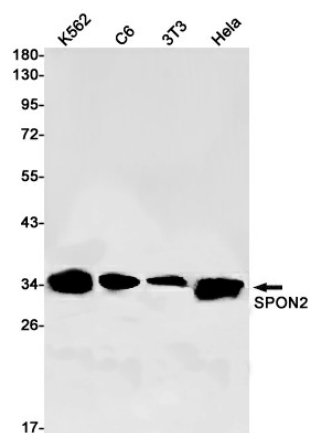
Affinity Purification

Conjugation

Un-conjugated

Storage Stability

Store at -20°C. Supplied in 50mM Tris-Glycine(pH 7.4), 0.15M NaCl, 40% Glycerol, 0.01% sodium azide and 0.05% BSA. Stable for 12 months from date of receipt.



Western blot detection of SPON2 in K562,C6,3T3,HeLa cell lysates using SPON2 antibody(1:1000 diluted).