

Recombinant

DGRmAb®

Mre11 (DGR19407) Rabbit mAb

db13499

Package : 10µL 20µL 50µL 100µL

Product Name : Mre11 (DGR19407) Rabbit mAb**Cat.No.:** db13499**Synonyms** : ATLD; HNGS1; MRE11A; MRE11B**Application** : WB, IHC-P, FC**Reactivity** : Human,Mouse,Rat**Host species** : Rabbit**Background**

This gene encodes a nuclear protein involved in homologous recombination, telomere length maintenance, and DNA double-strand break repair. By itself, the protein has 3' to 5' exonuclease activity and endonuclease activity. The protein forms a complex with the RAD50 homolog; this complex is required for nonhomologous joining of DNA ends and possesses increased single-stranded DNA endonuclease and 3' to 5' exonuclease activities. In conjunction with a DNA ligase, this protein promotes the joining of noncomplementary ends in vitro using short homologies near the ends of the DNA fragments. This gene has a pseudogene on chromosome 3. Alternative splicing of this gene results in two transcript variants encoding different isoforms. [provided by RefSeq, Jul 2008]

Immunogen

Recombinant protein of human Mre11

Gene ID

4361

Swiss Prot

P49959

Synonyms

ATLD; HNGS1; MRE11A; MRE11B

Reactivity

Human,Mouse,Rat

Application

WB, IHC-P, FC

Recommended dilution

WB: 1:1000

IHC-P: 1:200-1:2000

FC: 1:200-1:500

Calculated MW

81 kDa

Observed MW

81 kDa

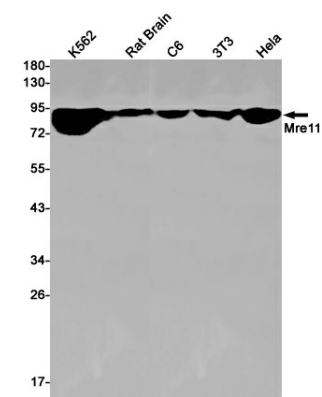
Host species

Rabbit

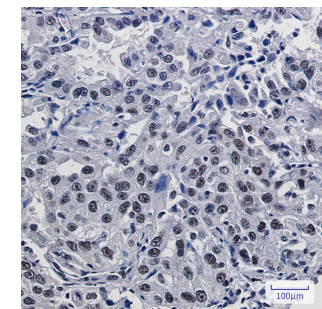
Clonality

Monoclonal

Clonality No.	DGR19407
Isotype	IgG
Purity	Affinity Purification
Conjugation	Un-conjugated
Storage Stability	Store at -20°C. Supplied in 50mM Tris-Glycine(pH 7.4), 0.15M NaCl, 40% Glycerol, 0.01% sodium azide and 0.05% BSA. Stable for 12 months from date of receipt.



Western blot detection of Mre11 in K562,Rat Brain,C6,3T3,Hela cell lysates using Mre11 antibody(1:1000 diluted).



Immunohistochemical analysis of paraffin-embedded human lung cancer using db13499 antibody.