

Recombinant

DGRmAb®

**RAB22A (DGR19427) Rabbit mAb**

db14333

Package : 10µL 20µL 50µL 100µL

**Product Name** : RAB22A (DGR19427) Rabbit mAb**Cat.No.:** db14333**Synonyms** : RAB22; Rab-22**Application** : WB, ICC/IF, IP**Reactivity** : Human,Mouse,Rat**Host species** : Rabbit**Background**

The protein encoded by this gene is a member of the RAB family of small GTPases. The GTP-bound form of the encoded protein has been shown to interact with early-endosomal antigen 1, and may be involved in the trafficking of and interaction between endosomal compartments. [provided by RefSeq, Jul 2008]

**Immunogen**

A synthetic peptide of human RAB22A

**Gene ID**

57403

**Swiss Prot**

Q9UL26

**Synonyms**

RAB22; Rab-22

**Reactivity**

Human,Mouse,Rat

**Application**

WB, ICC/IF, IP

**Recommended dilution**

WB: 1:1000-1:5000

ICC/IF: 1:100

IP: 1:10-1:100

**Calculated MW**

22 kDa

**Observed MW**

22 kDa

**Host species**

Rabbit

**Clonality**

Monoclonal

**Clonality No.**

DGR19427

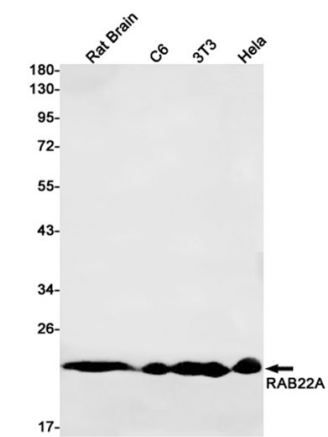
**Isotype**

IgG

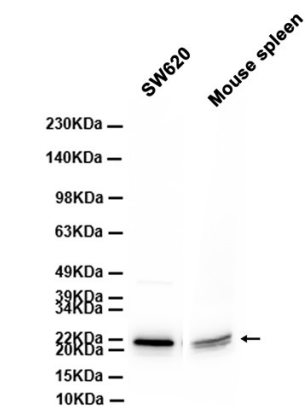
**Purity**

Affinity Purification

Conjugation	Un-conjugated
Storage Stability	Store at -20°C. Supplied in 50mM Tris-Glycine(pH 7.4), 0.15M NaCl, 40% Glycerol, 0.01% sodium azide and 0.05% BSA. Stable for 12 months from date of receipt.



Western blot detection of RAB22A in Rat Brain,C6,3T3,Hela cell lysates using RAB22A antibody(1:1000 diluted).



Western blot analysis of extracts from SW620 cells and Mouse spleen tissue using db14333 at 1:1000.