

Recombinant

DGRmAb®

SFRS3 (DGR19543) Rabbit mAb

db12148

Package : 10µL 20µL 50µL 100µL

Product Name : SFRS3 (DGR19543) Rabbit mAb**Cat.No.:** db12148**Synonyms** : SFRS3; SRp20**Application** : WB, IHC-P, ICC/IF, FC**Reactivity** : Human,Mouse,Rat**Host species** : Rabbit**Background**

The protein encoded by this gene is a member of the serine/arginine (SR)-rich family of pre-mRNA splicing factors, which constitute part of the spliceosome. Each of these factors contains an RNA recognition motif (RRM) for binding RNA and an RS domain for binding other proteins. The RS domain is rich in serine and arginine residues and facilitates interaction between different SR splicing factors. In addition to being critical for mRNA splicing, the SR proteins have also been shown to be involved in mRNA export from the nucleus and in translation. Two transcript variants, one protein-coding and the other non-coding, have been found for this gene. [provided by RefSeq, Sep 2010]

Immunogen

A synthetic peptide of human SFRS3

Gene ID

6428

Swiss Prot

P84103

Synonyms

SFRS3; SRp20

Reactivity

Human,Mouse,Rat

Application

WB, IHC-P, ICC/IF, FC

Recommended dilutionWB: 1:1000
IHC-P: 1:100-1:200
ICC/IF: 1:200-1:500
FC: 1:100-1:200**Calculated MW**

19 kDa

Observed MW

19 kDa

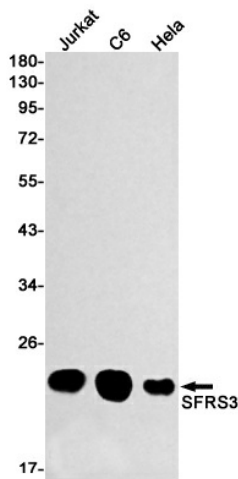
Host species

Rabbit

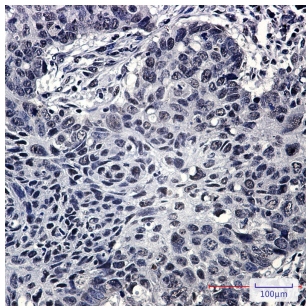
Clonality

Monoclonal

Clonality No.	DGR19543
Isotype	IgG
Purity	Affinity Purification
Conjugation	Un-conjugated
Storage Stability	Store at -20°C. Supplied in 50mM Tris-Glycine(pH 7.4), 0.15M NaCl, 40% Glycerol, 0.01% sodium azide and 0.05% BSA. Stable for 12 months from date of receipt.



Western blot detection of SFRS3 in Jurkat,C6,HeLa cell lysates using SFRS3 antibody(1:1000 diluted).



Immunohistochemical analysis of paraffin-embedded human lung cancer using db12148 antibody.