

Recombinant

DGRmAb®

PKC beta 2 (DGR19556) Rabbit mAb

db13454

Package : 10µL 20µL 50µL 100µL

Product Name : PKC beta 2 (DGR19556) Rabbit mAb**Cat.No.:** db13454**Synonyms** : PKCB; PRKCB1; PRKCB2; PKC-beta**Application** : WB, IHC, ICC/IF, FC, IP**Reactivity** : Human, Rat**Host species** : Rabbit**Background**

Protein kinase C (PKC) is a family of serine- and threonine-specific protein kinases that can be activated by calcium and second messenger diacylglycerol. PKC family members phosphorylate a wide variety of protein targets and are known to be involved in diverse cellular signaling pathways. PKC family members also serve as major receptors for phorbol esters, a class of tumor promoters. Each member of the PKC family has a specific expression profile and is believed to play a distinct role in cells. The protein encoded by this gene is one of the PKC family members. This protein kinase has been reported to be involved in many different cellular functions, such as B cell activation, apoptosis induction, endothelial cell proliferation, and intestinal sugar absorption. Studies in mice also suggest that this kinase may also regulate neuronal functions and correlate fear-induced conflict behavior after stress. Alternatively spliced transcript variants encoding distinct isoforms have been reported. [provided by RefSeq, Jul 2008]

Immunogen

A synthetic peptide of human PKC beta 2

Gene ID

5579

Swiss Prot

P05771

Synonyms

PKCB; PRKCB1; PRKCB2; PKC-beta

Reactivity

Human, Rat

Application

WB, IHC, ICC/IF, FC, IP

Recommended dilution

WB: 1:1000

IHC: 1:20

ICC/IF: 1:50

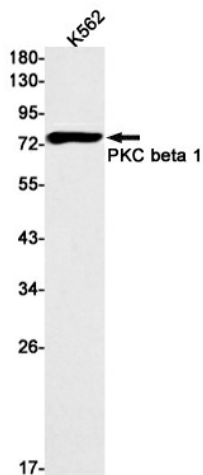
FC: 1:20

IP: 1:20

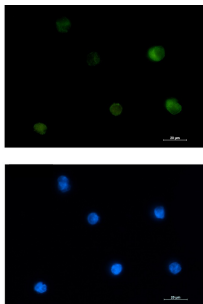
Calculated MW

77 kDa

Observed MW	77 kDa
Host species	Rabbit
Clonality	Monoclonal
Clonality No.	DGR19556
Isotype	IgG
Purity	Affinity Purification
Conjugation	Un-conjugated
Storage Stability	Store at -20°C. Supplied in 50mM Tris-Glycine(pH 7.4), 0.15M NaCl, 40% Glycerol, 0.01% sodium azide and 0.05% BSA. Stable for 12 months from date of receipt.



Western blot detection of PKC beta 1 in K562 cell lysates using PKC beta 1 antibody(1:1000 diluted).



Immunofluorescent analysis of K562 cells using db13454 antibody (green), and DAPI (blue).