

Recombinant

DGRmAb®

## KAT1 (DGR19782) Rabbit mAb

db12046

Package : 10μL 20μL 50μL 100μL

**Product Name :** KAT1 (DGR19782) Rabbit mAb**Cat.No.:** db12046**Synonyms :** KAT1**Application :** WB, IHC-P, ICC/IF, FC, IP**Reactivity :** Human,Mouse,Rat**Host species :** Rabbit**Background**

The protein encoded by this gene is a type B histone acetyltransferase (HAT) that is involved in the rapid acetylation of newly synthesized cytoplasmic histones, which are in turn imported into the nucleus for de novo deposition onto nascent DNA chains. Histone acetylation, particularly of histone H4, plays an important role in replication-dependent chromatin assembly. Specifically, this HAT can acetylate soluble but not nucleosomal histone H4 at lysines 5 and 12, and to a lesser degree, histone H2A at lysine 5. Alternatively spliced transcript variants have been identified for this gene. [provided by RefSeq, Jun 2009]

**Immunogen**

Recombinant protein of human KAT1

**Gene ID**

8520

**Swiss Prot**

O14929

**Synonyms**

KAT1

**Reactivity**

Human,Mouse,Rat

**Application**

WB, IHC-P, ICC/IF, FC, IP

**Recommended dilution**

WB: 1:1000

IHC-P: 1:200-1:500

ICC/IF: 1:200-1:500

FC: 1:100

IP: 1:50

**Calculated MW**

50 kDa

**Observed MW**

45 kDa

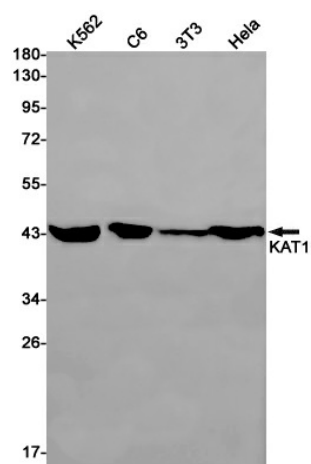
**Host species**

Rabbit

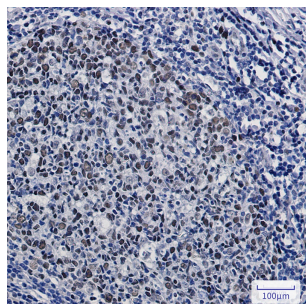
**Clonality**

Monoclonal

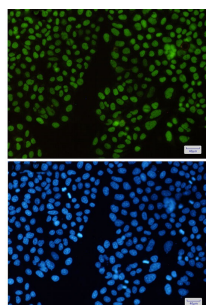
Clonality No.	DGR19782
Isotype	IgG
Purity	Affinity Purification
Conjugation	Un-conjugated
Storage Stability	Store at -20°C. Supplied in 50mM Tris-Glycine(pH 7.4), 0.15M NaCl, 40% Glycerol, 0.01% sodium azide and 0.05% BSA. Stable for 12 months from date of receipt.



Western blot detection of KAT1 in K562, C6, 3T3, HeLa cell lysates using KAT1 antibody(1:1000 diluted).



Immunohistochemical analysis of paraffin-embedded human tonsil using db12046 antibody.



Immunofluorescent analysis of HeLa cells using db12046 antibody (green), and DAPI (blue).