

Recombinant

DGRmAb®

**ELK1 (DGR19915) Rabbit mAb**

db14344

Package : 10µL 20µL 50µL 100µL

**Product Name** : ELK1 (DGR19915) Rabbit mAb**Cat.No.:** db14344**Synonyms** : ETS domain-containing protein Elk-1**Application** : WB, ICC/IF**Reactivity** : Human**Host species** : Rabbit**Background**

This gene is a member of the Ets family of transcription factors and of the ternary complex factor (TCF) subfamily. Proteins of the TCF subfamily form a ternary complex by binding to the the serum response factor and the serum response element in the promoter of the c-fos proto-oncogene. The protein encoded by this gene is a nuclear target for the ras-raf-MAPK signaling cascade. This gene produces multiple isoforms by using alternative translational start codons and by alternative splicing. Related pseudogenes have been identified on chromosomes 7 and 14. [provided by RefSeq, Mar 2012]

**Immunogen**

A synthetic peptide of human ELK1

**Gene ID**

2002

**Swiss Prot**

P19419

**Synonyms**

ETS domain-containing protein Elk-1

**Reactivity**

Human

**Application**

WB, ICC/IF

**Recommended dilution**WB: 1:1000  
ICC/IF: 1:100**Calculated MW**

45 kDa

**Observed MW**

62 kDa

**Host species**

Rabbit

**Clonality**

Monoclonal

**Clonality No.**

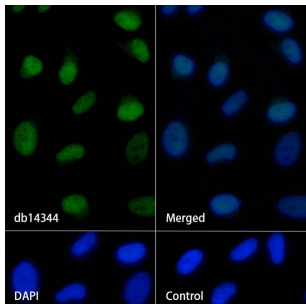
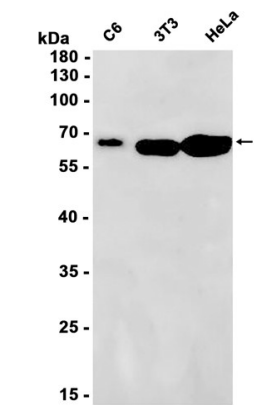
DGR19915

**Isotype**

IgG

|                   |   |
|-------------------|---|
| Purity            | Affinity Purification   |
| Conjugation       | Un-conjugated   |
| Storage Stability | Store at -20°C. Supplied in 50mM Tris-Glycine(pH 7.4), 0.15M NaCl, 40% Glycerol, 0.01% sodium azide and 0.05% BSA. Stable for 12 months from date of receipt. |

Western blot analysis of extracts from C6, 3T3, HeLa cells using db14344 at 1:1000.



Immunofluorescence analysis of HeLa cells labelling ELK1 with db14344.

The cells were fixed with 4% PFA (10min, RT) followed by treatment with 0.1% Triton X-100 (10min, RT), and blocked in 1% BSA/10% normal goat serum/0.3M glycine in 0.1% PBS-Tween 20 for 1h. The cells were then incubate with db14344 (1:100) at room temprature for 1h, followed by a further incubation at room temperature for 45min with Goat Anti Rabbit IgG (H+L)-AF488 (db10005, shown in green). Nuclear DNA was labeled in blue with DAPI.

Control: Secondary antibody only.