

Recombinant

DGRmAb®

CRM1 (DGR19917) Rabbit mAb

db12971

Package : 10µL 20µL 50µL 100µL

Product Name : CRM1 (DGR19917) Rabbit mAb**Cat.No.:** db12971**Synonyms :** emb; CRM1; exp1**Application :** WB, ICC/IF, FC**Reactivity :** Human,Mouse,Rat**Host species :** Rabbit**Background**

This cell-cycle-regulated gene encodes a protein that mediates leucine-rich nuclear export signal (NES)-dependent protein transport. The protein specifically inhibits the nuclear export of Rev and U snRNAs. It is involved in the control of several cellular processes by controlling the localization of cyclin B, MPAK, and MAPKAP kinase 2. This protein also regulates NFAT and AP-1. [provided by RefSeq, Jan 2015]

Immunogen

A synthetic peptide of human CRM1

Gene ID

7514

Swiss Prot

O14980

Synonyms

emb; CRM1; exp1

Reactivity

Human,Mouse,Rat

Application

WB, ICC/IF, FC

Recommended dilution

WB: 1:1000

ICC/IF: 1:200-1:500

FC: 1:100-1:200

Calculated MW

123 kDa

Observed MW

123 kDa

Host species

Rabbit

Clonality

Monoclonal

Clonality No.

DGR19917

Isotype

IgG

Purity

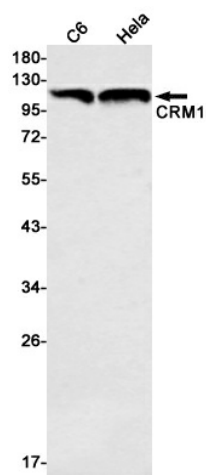
Affinity Purification

Conjugation

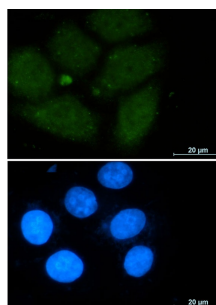
Un-conjugated

Storage Stability

Store at -20°C. Supplied in 50mM Tris-Glycine(pH 7.4), 0.15M NaCl, 40% Glycerol, 0.01% sodium azide and 0.05% BSA. Stable for 12 months from date of receipt.



Western blot detection of CRM1 in C6, HeLa cell lysates using CRM1 antibody (1:1000 diluted).



Immunofluorescent analysis of A549 cells using db12971 antibody (green), and DAPI (blue).