

Recombinant

DGRmAb®

Histone H1.3 (DGR19927) Rabbit mAb

db14622

Package : 10µL 20µL 50µL 100µL

Product Name : Histone H1.3 (DGR19927) Rabbit mAb**Cat.No.:** db14622**Synonyms** : H1D; H1.3; H1F3; H1s-2**Application** : WB, IHC-P, ICC/IF, FC, IP**Reactivity** : Human**Host species** : Rabbit**Background**

Histones are basic nuclear proteins responsible for nucleosome structure of the chromosomal fiber in eukaryotes. Two molecules of each of the four core histones (H2A, H2B, H3, and H4) form an octamer, around which approximately 146 bp of DNA is wrapped in repeating units, called nucleosomes. The linker histone, H1, interacts with linker DNA between nucleosomes and functions in the compaction of chromatin into higher order structures. This gene is intronless and encodes a replication-dependent histone that is a member of the histone H1 family. Transcripts from this gene lack polyA tails but instead contain a palindromic termination element. This gene is found in the large histone gene cluster on chromosome 6. [provided by RefSeq, Aug 2015]

Immunogen

A synthetic peptide of human Histone H1.3

Gene ID

3007

Swiss Prot

P16402

Synonyms

H1D; H1.3; H1F3; H1s-2

Reactivity

Human

Application

WB, IHC-P, ICC/IF, FC, IP

Recommended dilution

WB: 1:1000-1:5000

IHC-P: 1:200-1:1000

ICC/IF: 1:200-1:500

FC: 1:10-1:100

IP: 1:20-1:50

Calculated MW

22 kDa

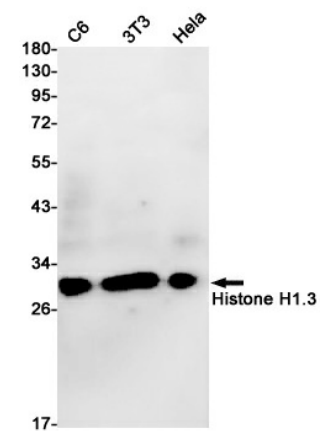
Observed MW

30 kDa

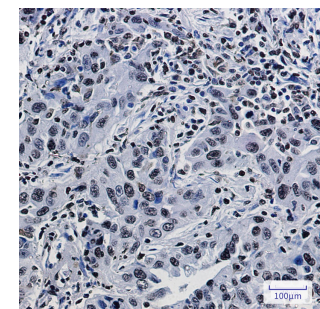
Host species

Rabbit

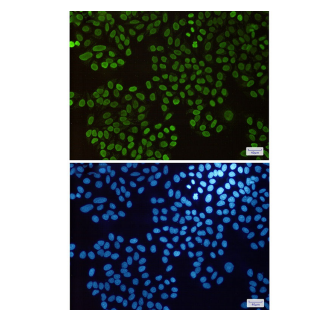
Clonality	Monoclonal
Clonality No.	DGR19927
Isotype	IgG
Purity	Affinity Purification
Conjugation	Un-conjugated
Storage Stability	Store at -20°C. Supplied in 50mM Tris-Glycine(pH 7.4), 0.15M NaCl, 40% Glycerol, 0.01% sodium azide and 0.05% BSA. Stable for 12 months from date of receipt.



Western blot detection of Histone H1.3 in C6,3T3,HeLa cell lysates using Histone H1.3 antibody(1:1000 diluted).



Immunohistochemical analysis of paraffin-embedded human lung cancer using db14622 antibody.



Immunofluorescent analysis of HeLa cells using db14622 antibody (green), and DAPI (blue).