

Recombinant

DGRmAb®

## PHAPI2 (DGR20028) Rabbit mAb

db12884

Package : 10µL 20µL 50µL 100µL

**Product Name** : PHAPI2 (DGR20028) Rabbit mAb**Cat.No.:** db12884**Synonyms** : APRIL; SSP29; PHAPI2**Application** : WB, IHC-P, ICC/IF, FC**Reactivity** : Human,Mouse,Rat**Host species** : Rabbit

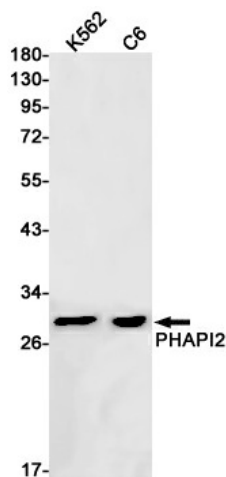
<b>Background</b>	Multifunctional protein working as a cell cycle progression factor as well as a cell survival factor. Required for the progression from the G1 to the S phase. Anti-apoptotic protein which functions as a caspase-3 inhibitor. Has no phosphatase 2A (PP2A) inhibitor activity (By similarity). Exhibits histone chaperone properties, stimulating core histones to assemble into a nucleosome.
<b>Immunogen</b>	A synthetic peptide of human PHAPI2
<b>Gene ID</b>	10541
<b>Swiss Prot</b>	Q92688
<b>Synonyms</b>	APRIL; SSP29; PHAPI2
<b>Reactivity</b>	Human,Mouse,Rat
<b>Application</b>	WB, IHC-P, ICC/IF, FC
<b>Recommended dilution</b>	WB: 1:1000-1:5000 IHC-P: 1:50-1:100 ICC/IF: 1:100-1:200 FC: 1:20
<b>Calculated MW</b>	29 kDa
<b>Observed MW</b>	29 kDa
<b>Host species</b>	Rabbit
<b>Clonality</b>	Monoclonal
<b>Clonality No.</b>	DGR20028
<b>Isotype</b>	IgG
<b>Purity</b>	Affinity Purification

**Conjugation**

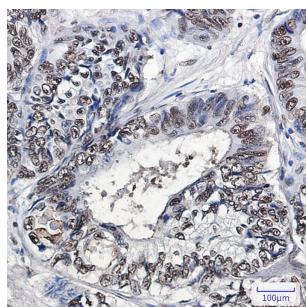
Un-conjugated

**Storage Stability**

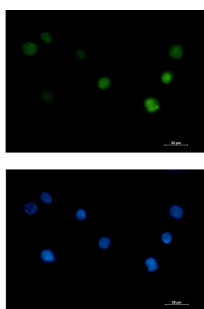
Store at -20°C. Supplied in 50mM Tris-Glycine(pH 7.4), 0.15M NaCl, 40% Glycerol, 0.01% sodium azide and 0.05% BSA. Stable for 12 months from date of receipt.



Western blot detection of PHAPI2 in K562,C6 cell lysates using PHAPI2 antibody(1:1000 diluted).



Immunohistochemical analysis of paraffin-embedded human colon cancer tissue using db12884 antibody.



Immunofluorescent analysis of K562 cells using db12884 antibody (green), and DAPI (blue).