

Recombinant

DGRmAb®

cAMP Protein Kinase Catalytic subunit (DGR20464) Rabbit mAb

db14832

Package : 10µL 20µL 50µL 100µL

Product Name : cAMP Protein Kinase Catalytic subunit (DGR20464) Rabbit mAb**Cat.No.:** db14832**Synonyms** : PKACA; PPNAD4**Application** : WB, IHC-P, ICC/IF, FC, IP**Reactivity** : Human,Mouse,Rat**Host species** : Rabbit**Background**

This gene encodes one of the catalytic subunits of protein kinase A, which exists as a tetrameric holoenzyme with two regulatory subunits and two catalytic subunits, in its inactive form. cAMP causes the dissociation of the inactive holoenzyme into a dimer of regulatory subunits bound to four cAMP and two free monomeric catalytic subunits. Four different regulatory subunits and three catalytic subunits have been identified in humans. cAMP-dependent phosphorylation of proteins by protein kinase A is important to many cellular processes, including differentiation, proliferation, and apoptosis. Constitutive activation of this gene caused either by somatic mutations, or genomic duplications of regions that include this gene, have been associated with hyperplasias and adenomas of the adrenal cortex and are linked to corticotropin-independent Cushing's syndrome. Alternative splicing results in multiple transcript variants encoding different isoforms. Tissue-specific isoforms that differ at the N-terminus have been described, and these isoforms may differ in the post-translational modifications that occur at the N-terminus of some isoforms. [provided by RefSeq, Jan 2015]

Immunogen

A synthetic peptide of human cAMP Protein Kinase Catalytic subunit

Gene ID

5566

Swiss Prot

P17612

Synonyms

PKACA; PPNAD4

Reactivity

Human,Mouse,Rat

Application

WB, IHC-P, ICC/IF, FC, IP

Recommended dilution

WB: 1:5000-1:50000

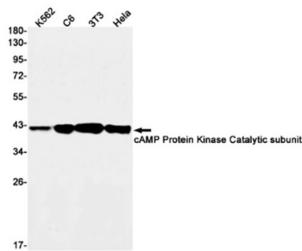
IHC-P: 1:200-1:500

ICC/IF: 1:100-1:200

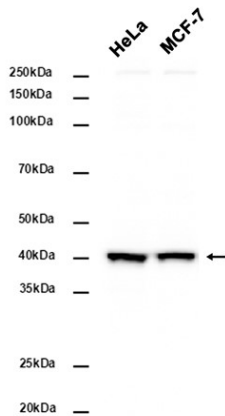
FC: 1:50-1:100

IP: 1:50

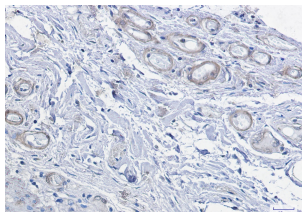
Calculated MW	41 kDa
Observed MW	41 kDa
Host species	Rabbit
Clonality	Monoclonal
Clonality No.	DGR20464
Isotype	IgG
Purity	Affinity Purification
Conjugation	Un-conjugated
Storage Stability	Store at -20°C. Supplied in 50mM Tris-Glycine(pH 7.4), 0.15M NaCl, 40% Glycerol, 0.01% sodium azide and 0.05% BSA. Stable for 12 months from date of receipt.



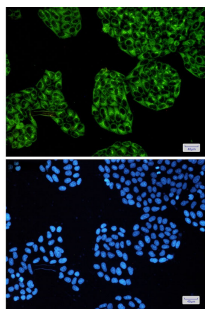
Western blot detection of cAMP Protein Kinase Catalytic subunit in K562,C6,3T3,Hela cell lysates using cAMP Protein Kinase Catalytic subunit antibody(1:1000 diluted).



Western blot analysis of extracts from HeLa, MCF-7 cells using db14832 at 1:5000.



Immunohistochemical analysis of paraffin-embedded human colon cancer using db14832 antibody.



Immunofluorescent analysis of HeLa cells using db14832 antibody (green), and DAPI (blue).