

Recombinant

DGRmAb®

AAMP (DGR20625) Rabbit mAb

db11241

Package : 10µL 20µL 50µL 100µL

Product Name : AAMP (DGR20625) Rabbit mAb**Cat.No.:** db11241**Synonyms** : Angio-associated migratory cell protein**Application** : WB, ICC/IF, FC**Reactivity** : Human,Mouse,Rat**Host species** : Rabbit**Background**

The gene is a member of the immunoglobulin superfamily. The encoded protein is associated with angiogenesis, with potential roles in endothelial tube formation and the migration of endothelial cells. It may also regulate smooth muscle cell migration via the RhoA pathway. The encoded protein can bind to heparin and may mediate heparin-sensitive cell adhesion. [provided by RefSeq, Oct 2014]

Immunogen

A synthetic peptide of human AAMP

Gene ID

14

Swiss Prot

Q13685

Synonyms

Angio-associated migratory cell protein

Reactivity

Human,Mouse,Rat

Application

WB, ICC/IF, FC

Recommended dilution

WB: 1:1000-1:5000

ICC/IF: 1:100-1:200

FC: 1:10-1:100

Calculated MW

47 kDa

Observed MW

47 kDa

Host species

Rabbit

Clonality

Monoclonal

Clonality No.

DGR20625

Isotype

IgG

Purity

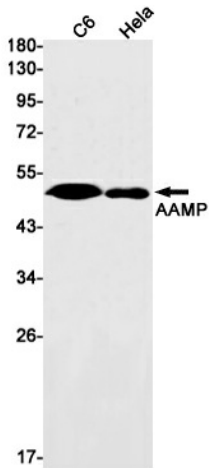
Affinity Purification

Conjugation

Un-conjugated

Storage Stability

Store at -20°C. Supplied in 50mM Tris-Glycine(pH 7.4), 0.15M NaCl, 40% Glycerol, 0.01% sodium azide and 0.05% BSA. Stable for 12 months from date of receipt.



Western blot detection of AAMP in C6,HeLa cell lysates using AAMP antibody(1:1000 diluted).