

Recombinant

DGRmAb®

CSHL1 (DGR20787) Rabbit mAb

db12531

Package : 10µL 20µL 50µL 100µL

Product Name : CSHL1 (DGR20787) Rabbit mAb**Cat.No.:** db12531**Synonyms** : CSL; CS-5; GHB4; CSHP1; hCS-L**Application** : WB, IHC-P**Reactivity** : Human**Host species** : Rabbit**Background**

The protein encoded by this gene is a member of the somatotropin/prolactin family of hormones which play an important role in growth control. The gene, along with four other related genes, is located at the growth hormone locus on chromosome 17 where they are interspersed in the same transcriptional orientation; an arrangement which is thought to have evolved by a series of gene duplications. Although the five genes share a remarkably high degree of sequence identity, they are expressed selectively in different tissues. This particular family member is expressed in placental villi, although it was originally thought to be a pseudogene. In fact, alternative splicing suggests that the majority of the transcripts would be unable to express a secreted protein. Alternatively spliced transcript variants encoding different isoforms have been identified. [provided by RefSeq, Jul 2008]

Immunogen

Recombinant protein of human CSHL1

Gene ID

1444

Swiss Prot

Q14406

Synonyms

CSL; CS-5; GHB4; CSHP1; hCS-L

Reactivity

Human

Application

WB, IHC-P

Recommended dilution

WB: 1:2000-1:20000

IHC-P: 1:200-1:500

Calculated MW

25 kDa

Observed MW

25 kDa

Host species

Rabbit

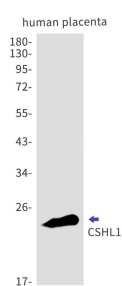
Clonality

Monoclonal

Clonality No.

DGR20787

Isotype	IgG
Purity	Affinity Purification
Conjugation	Un-conjugated
Storage Stability	Store at -20°C. Supplied in 50mM Tris-Glycine(pH 7.4), 0.15M NaCl, 40% Glycerol, 0.01% sodium azide and 0.05% BSA. Stable for 12 months from date of receipt.



Western blot detection of CSHL1 in human placenta cell lysates using CSHL1 antibody(1:1000 diluted).