

Recombinant

DGRmAb®

Glyt2 (DGR20922) Rabbit mAb

db11247

Package : 10µL 20µL 50µL 100µL

Product Name : Glyt2 (DGR20922) Rabbit mAb**Cat.No.:** db11247**Synonyms :** NET1; GLYT2; HKPX3; GLYT-2**Application :** WB**Reactivity :** Human,Mouse,Rat**Host species :** Rabbit**Background**

This gene encodes a sodium- and chloride-dependent glycine neurotransmitter transporter. This integral membrane glycoprotein is responsible for the clearance of extracellular glycine during glycine-mediated neurotransmission. This protein is found in glycinergic axons and maintains a high presynaptic pool of neurotransmitter at glycinergic synapses. Mutations in this gene cause hyperekplexia; a heterogenous neurological disorder characterized by exaggerated startle responses and neonatal apnea. Two transcript variants encoding different isoforms have been found for this gene. [provided by RefSeq, Jan 2016]

Immunogen

A synthetic peptide of human Glyt2

Gene ID

9152

Swiss Prot

Q9Y345

Synonyms

NET1; GLYT2; HKPX3; GLYT-2

Reactivity

Human,Mouse,Rat

Application

WB

Recommended dilution

WB: 1:1000-1:5000

Calculated MW

87 kDa

Observed MW

87 kDa

Host species

Rabbit

Clonality

Monoclonal

Clonality No.

DGR20922

Isotype

IgG

Purity

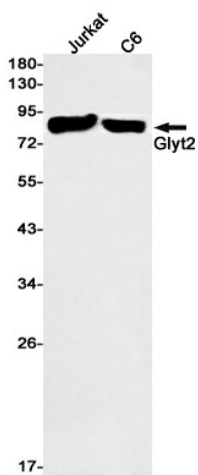
Affinity Purification

Conjugation

Un-conjugated

Storage Stability

Store at -20°C. Supplied in 50mM Tris-Glycine(pH 7.4), 0.15M NaCl, 40% Glycerol, 0.01% sodium azide and 0.05% BSA. Stable for 12 months from date of receipt.



Western blot detection of Glyt2 in Jurkat,C6 cell lysates using Glyt2 antibody(1:1000 diluted).