

Recombinant

DGRmAb®

Bag1 (DGR20935) Rabbit mAb

db14435

Package : 10µL 20µL 50µL 100µL

Product Name : Bag1 (DGR20935) Rabbit mAb**Cat.No.:** db14435**Synonyms** : HAP; BAG-1; RAP46**Application** : WB, IHC-P, ICC/IF**Reactivity** : Human,Mouse,Rat**Host species** : Rabbit**Background**

The oncogene BCL2 is a membrane protein that blocks a step in a pathway leading to apoptosis or programmed cell death. The protein encoded by this gene binds to BCL2 and is referred to as BCL2-associated athanogene. It enhances the anti-apoptotic effects of BCL2 and represents a link between growth factor receptors and anti-apoptotic mechanisms. Multiple protein isoforms are encoded by this mRNA through the use of a non-AUG (CUG) initiation codon, and three alternative downstream AUG initiation codons. A related pseudogene has been defined on chromosome X. [provided by RefSeq, Feb 2010]

Immunogen

A synthetic peptide of human Bag1

Gene ID

573

Swiss Prot

Q99933

Synonyms

HAP; BAG-1; RAP46

Reactivity

Human,Mouse,Rat

Application

WB, IHC-P, ICC/IF

Recommended dilutionWB: 1:1000
IHC-P: 1:100
ICC/IF: 1:100-1:200**Calculated MW**

39 kDa

Observed MW

52,46,33 kDa

Host species

Rabbit

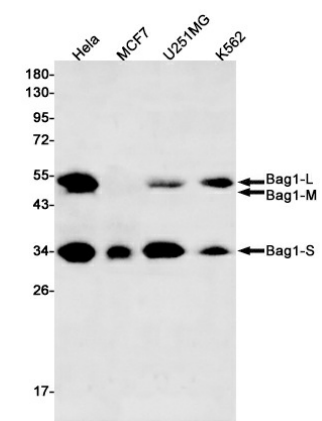
Clonality

Monoclonal

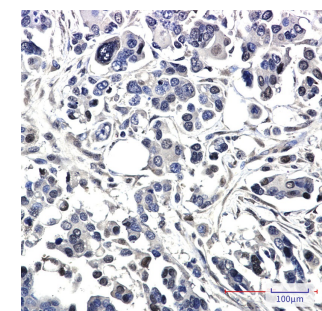
Clonality No.

DGR20935

Isotype	IgG
Purity	Affinity Purification
Conjugation	Un-conjugated
Storage Stability	Store at -20°C. Supplied in 50mM Tris-Glycine(pH 7.4), 0.15M NaCl, 40% Glycerol, 0.01% sodium azide and 0.05% BSA. Stable for 12 months from date of receipt.



Western blot detection of Bag1 in HeLa,MCF7,U251MG,K562 cell lysates using Bag1 antibody(1:500 diluted).



Immunohistochemical analysis of paraffin-embedded human Cholangiocarcinoma using db14435 antibody.