

Recombinant

DGRmAb®

**Lamin B1 (DGR11146) Rabbit mAb**

db13127

Package : 10µL 20µL 50µL 100µL

**Product Name** : Lamin B1 (DGR11146) Rabbit mAb**Cat.No.:** db13127**Synonyms** : LMN; ADLD; LMN2; LMNB**Application** : WB, ICC/IF, FC**Reactivity** : Human, Mouse, Rat**Host species** : Rabbit

<b>Background</b>	This gene encodes one of the two B-type lamin proteins and is a component of the nuclear lamina. A duplication of this gene is associated with autosomal dominant adult-onset leukodystrophy (ADLD). Alternative splicing results in multiple transcript variants. [provided by RefSeq, Dec 2015]
<b>Immunogen</b>	A synthetic peptide of human Lamin B1
<b>Gene ID</b>	4001
<b>Swiss Prot</b>	P20700
<b>Synonyms</b>	LMN; ADLD; LMN2; LMNB
<b>Reactivity</b>	Human, Mouse, Rat
<b>Application</b>	WB, ICC/IF, FC
<b>Recommended dilution</b>	WB: 1:1000 IHC: 1:20-1:500 ICC/IF: 1:50 IP: 1:20
<b>Calculated MW</b>	66 kDa
<b>Observed MW</b>	70 kDa
<b>Host species</b>	Rabbit
<b>Clonality</b>	Monoclonal
<b>Clonality No.</b>	DGR11146
<b>Isotype</b>	IgG
<b>Purity</b>	Affinity Purification

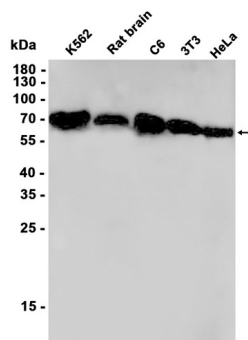
Conjugation

Un-conjugated

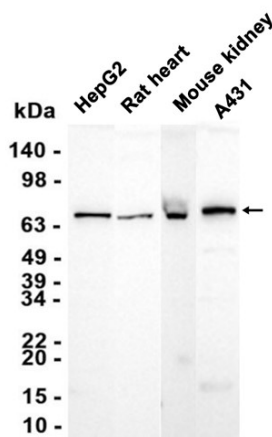
Storage Stability

Store at -20°C. Supplied in 50mM Tris-Glycine(pH 7.4), 0.15M NaCl, 40% Glycerol, 0.01% sodium azide and 0.05% BSA. Stable for 12 months from date of receipt.

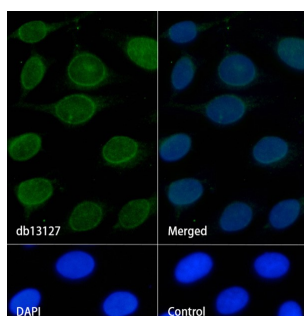
Western blot analysis of extracts from K562, C6, 3T3, HeLa cells and Rat brain tissue using db13127 at 1:1000.



Western blot analysis of extracts from HepG2, A431 cells and Rat heart, Mouse kidney tissues using db13127 at 1:1000.



Immunofluorescence analysis of HeLa cells labelling Lamin B1 with db13127.



The cells were fixed with cold 100% methanol (10min, 4°C) and blocked in 1% BSA/10% normal goat serum/0.3M glycine in 0.1% PBS-Tween 20 for 1h. The cells were then incubate with db13127 (1:50) at room temprature for 1h, followed by a further incubation at room temperature for 45min with Goat Anti Rabbit IgG (H+L)-AF488 (db10005, shown in green). Nuclear DNA was labeled in blue with DAPI.

Control: Secondary antibody only.