

Recombinant

DGRmAb®

beta III Tubulin (DGR12792) Rabbit mAb

db13262

Package : 10µL 20µL 50µL 100µL

Product Name : beta III Tubulin (DGR12792) Rabbit mAb**Cat.No.:** db13262**Synonyms** : CDCBM; FEOM3; TUBB4; CDCBM1; CFEOM3; beta-4; CFEOM3A**Application** : WB, IHC-P, ICC/IF, FC**Reactivity** : Human,Mouse,Rat**Host species** : Rabbit**Background**

This gene encodes a class III member of the beta tubulin protein family. Beta tubulins are one of two core protein families (alpha and beta tubulins) that heterodimerize and assemble to form microtubules. This protein is primarily expressed in neurons and may be involved in neurogenesis and axon guidance and maintenance. Mutations in this gene are the cause of congenital fibrosis of the extraocular muscles type 3. Alternate splicing results in multiple transcript variants. A pseudogene of this gene is found on chromosome 6. [provided by RefSeq, Oct 2010]

Immunogen

A synthetic peptide of human beta III Tubulin

Gene ID

10381

Swiss Prot

Q13509

Synonyms

CDCBM; FEOM3; TUBB4; CDCBM1; CFEOM3; beta-4; CFEOM3A

Reactivity

Human,Mouse,Rat

Application

WB, IHC-P, ICC/IF, FC

Recommended dilution

WB: 1:2000-1:20000

IHC-P: 1:1000-1:5000

ICC/IF: 1:50

FC: 1:20

Calculated MW

50 kDa

Observed MW

50 kDa

Host species

Rabbit

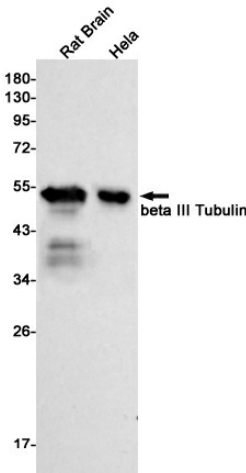
Clonality

Monoclonal

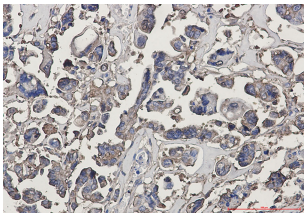
Clonality No.

DGR12792

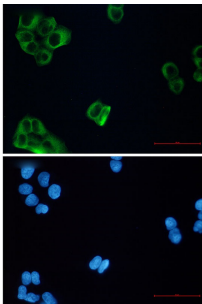
Isotype	IgG
Purity	Affinity Purification
Conjugation	Un-conjugated
Storage Stability	Store at -20°C. Supplied in 50mM Tris-Glycine(pH 7.4), 0.15M NaCl, 40% Glycerol, 0.01% sodium azide and 0.05% BSA. Stable for 12 months from date of receipt.



Western blot detection of beta III Tubulin in Rat Brain,HeLa cell lysates using beta III Tubulin antibody(1:1000 diluted).



Immunohistochemical analysis of paraffin-embedded human Cholangiocarcinoma using db13262 antibody.



Immunofluorescent analysis of HeLa cells using db13262 antibody (green), and DAPI (blue).