

Recombinant

DGRmAb®

Actin (DGR13895) Rabbit mAb

db14040

Package : 10µL 20µL 50µL 100µL

Product Name : Actin (DGR13895) Rabbit mAb**Cat.No.:** db14040**Synonyms** : ACTA; ASMA; CFTD; MPFD; NEM1; NEM2; NEM3; SHPM; CFTD1; CFTDM**Application** : WB, IHC-P, ICC/IF, FC, IP**Reactivity** : Human,Mouse,Rat**Host species** : Rabbit**Background**

The product encoded by this gene belongs to the actin family of proteins, which are highly conserved proteins that play a role in cell motility, structure and integrity. Alpha, beta and gamma actin isoforms have been identified, with alpha actins being a major constituent of the contractile apparatus, while beta and gamma actins are involved in the regulation of cell motility. This actin is an alpha actin that is found in skeletal muscle. Mutations in this gene cause nemaline myopathy type 3, congenital myopathy with excess of thin myofilaments, congenital myopathy with cores, and congenital myopathy with fiber-type disproportion, diseases that lead to muscle fiber defects. [provided by RefSeq, Jul 2008]

Immunogen

A synthetic peptide of human Actin

Gene ID

58

Swiss Prot

P68133

Synonyms

ACTA; ASMA; CFTD; MPFD; NEM1; NEM2; NEM3; SHPM; CFTD1; CFTDM

Reactivity

Human,Mouse,Rat

Application

WB, IHC-P, ICC/IF, FC, IP

Recommended dilution

WB: 1:1000-1:5000

IHC-P: 1:200-1:1000

ICC/IF: 1:50

FC: 1:50-1:100

IP: 1:20-1:50

Calculated MW

42 kDa

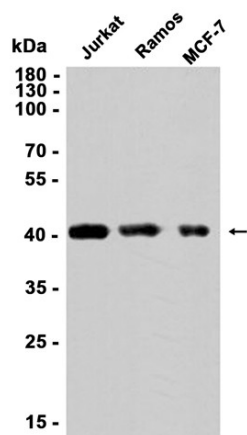
Observed MW

42 kDa

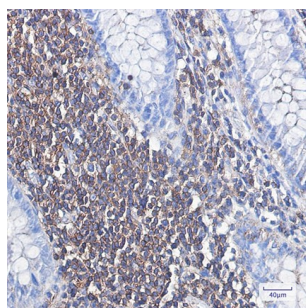
Host species

Rabbit

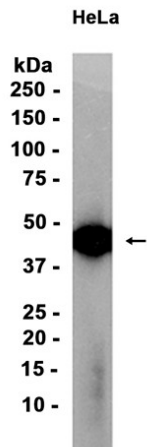
Clonality	Monoclonal
Clonality No.	DGR13895
Isotype	IgG
Purity	Affinity Purification
Conjugation	Un-conjugated
Storage Stability	Store at -20°C. Supplied in 50mM Tris-Glycine(pH 7.4), 0.15M NaCl, 40% Glycerol, 0.01% sodium azide and 0.05% BSA. Stable for 12 months from date of receipt.



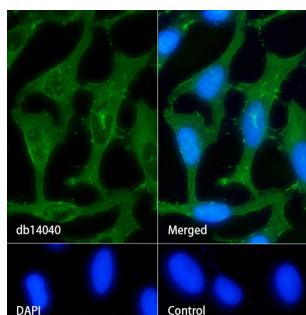
Western blot analysis of extracts from Jurkat, Ramos, MCF-7 cells using db14040 at 1:1000.



Immunohistochemical analysis of paraffin-embedded human colon cancer using db14040 antibody.



Western blot analysis of extracts from HeLa cells using db14040 at 1:1000.



Immunofluorescence analysis of HeLa cells labelling Actin with db14040.

The cells were fixed with cold 100% methanol (10min, 4°C) and blocked in 1% BSA/10% normal goat serum/0.3M glycine in 0.1% PBS-Tween 20 for 1h. The cells were then incubate with db14040 (1:50) at room temprature for 1h, followed by a further incubation at room temperature for 45min with Goat Anti Rabbit IgG (H+L)-AF488 (db10005, shown in green). Nuclear DNA was labeled in blue with DAPI.

Control: Secondary antibody only.

